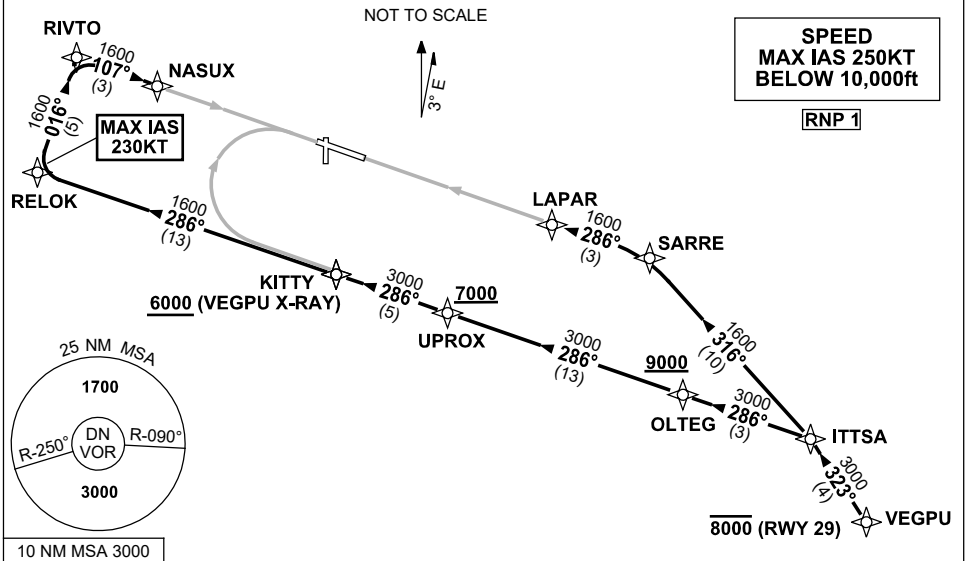


**STANDARD INSTRUMENT ARRIVAL (STAR)  
VEGPU NINE WHISKEY, X-RAY ARRIVAL (RNAV)  
DARWIN, NT (YPDN)**

**30 NOV 2023**

ATIS 128.25 308 316.2	APP-E 125.2 APP-W 134.1	TWR 133.1	SMC 121.8		Bearings are Magnetic Elevations in FEET AMSL
-----------------------------	----------------------------	--------------	--------------	--	--



**ARRIVAL: VEGPU NINE**

**RWY 11 WHISKEY:**

- From VEGPU track 323° to ITTSA
- Turn LEFT, track 286° to OLTEG  
Cross OLTEG AT or ABV 9000ft
- Track 286° to UPROX  
Cross UPROX AT or ABV 7000ft
- Track 286° to KITTY for RNP W (AR) or RNP S (AR) RWY 11 approach

**RWY 11 X-RAY:**

- From VEGPU track 323° to ITTSA
- Turn LEFT, track 286° to OLTEG  
Cross OLTEG AT or ABV 9000ft
- Track 286° to UPROX  
Cross UPROX AT or ABV 7000ft
- Track 286° to KITTY  
Cross KITTY AT or ABV 6000ft
- Track 286° to RELOK  
MAX IAS 230KT from RELOK
- Turn RIGHT track 016° to RIVTO
- Turn RIGHT track 107° to NASUX for RNP X (AR) or RNP Y (AR) RWY 11 approach

**RWY 29 X-RAY:**

- Cross VEGPU AT or BLW 8000ft
- From VEGPU, track 323° to ITTSA
- Turn LEFT, track 316° to SARRE
- Turn LEFT, track 286° to LAPAR for RNP X (AR) or RNP Y (AR) RWY 29 approach

**COMMUNICATIONS FAILURE: PROCEDURE IN IMC**

- Squawk 7600, comply with vertical navigation requirements, but not below MSA.
- Track via the latest STAR clearance to the nominated runway, then fly the most suitable approach in accordance with ERSA EMERG Section 1.5.

Changes: RIVTO REPLACES ALLOT, RELOK REPLACES GIVEN, VALIDITY NUMBER, Editorial.

PDNSR07-177