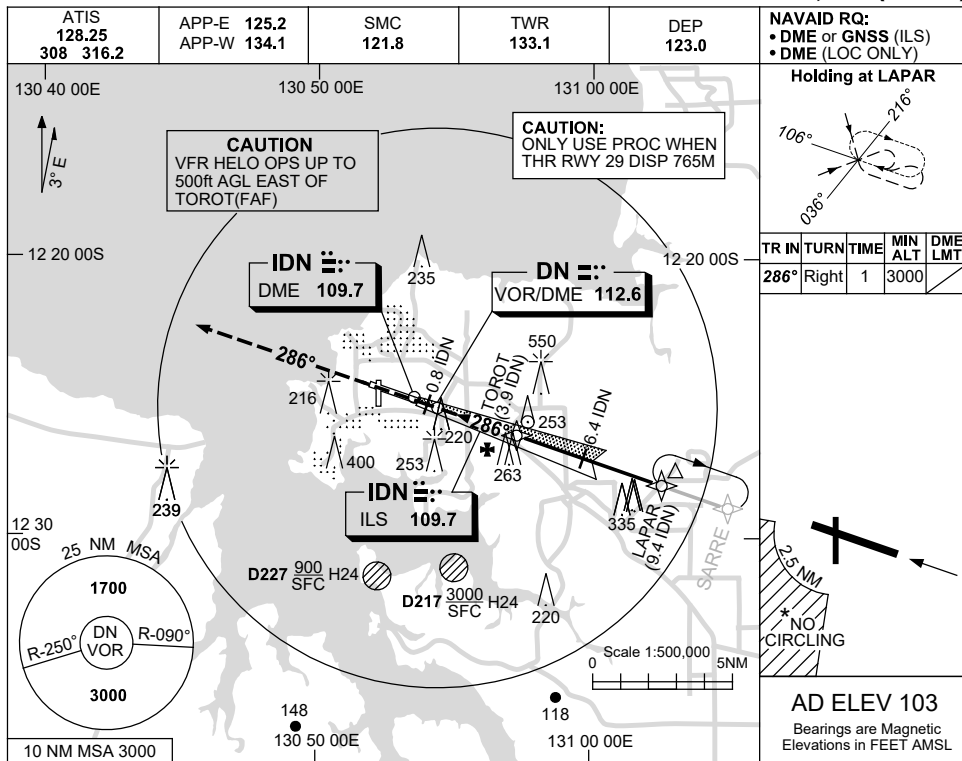


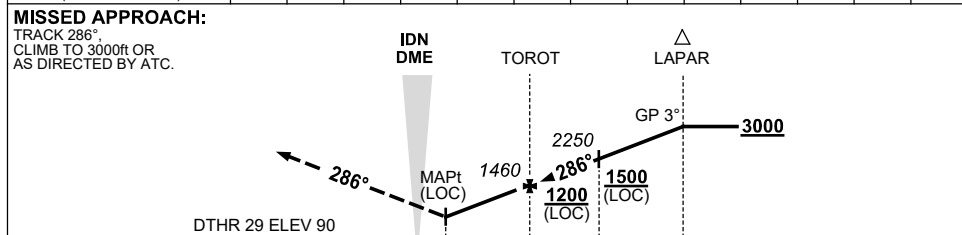
USE QNH

LOC-T RWY 29
DARWIN, NT (YPDN)

21 MAR 2024



NM TO IDN DME	1	2	3	3.9	5	6	6.4	7	8	8.7			
ALT (3° APCH PATH)	520	850	1170	1460	1810	2130	2250	2440	2760	3000			



NM TO IDN DME		0	0.8	3.9	6.4	9.4
NM TO DTHR 29		0.2	1	4.1	6.6	9.6

NOTES

- ACFT MAY BE RADAR VECTORED TO FNA.
- SPECIAL ALTN MNM 800/4 KM.
- DME 41X(110.4) NOT TO BE USED WITH THIS PROCEDURE.
- NO CIRCLING IN SECTOR SW OF RWY 11/29 AND RWY 18/36 BEYOND 2.5NM.

CATEGORY	A	B	C	D
S-I LOC	520 (430-2.4)			
CIRCLING *	700 (597-2.4)	800 (697-4.0)	1000 (897-5.0)	
ALTERNATE *	(1097-4.4)	(1197-6.0)	(1397-7.0)	

Changes: S-I LOC VIS.

PDNII04-178