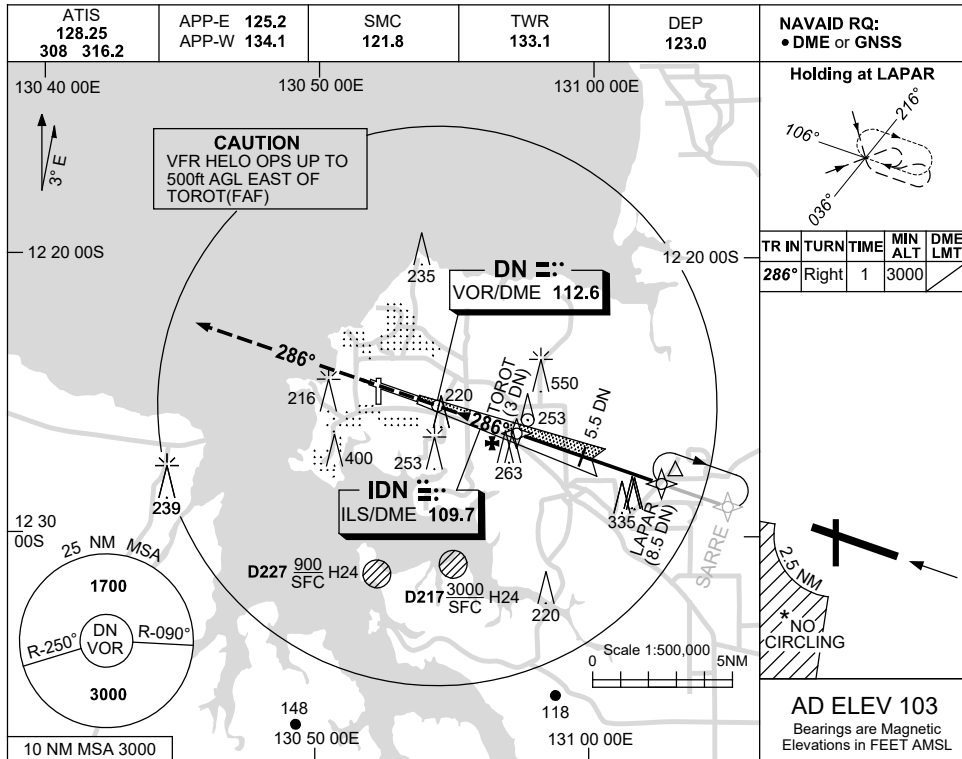


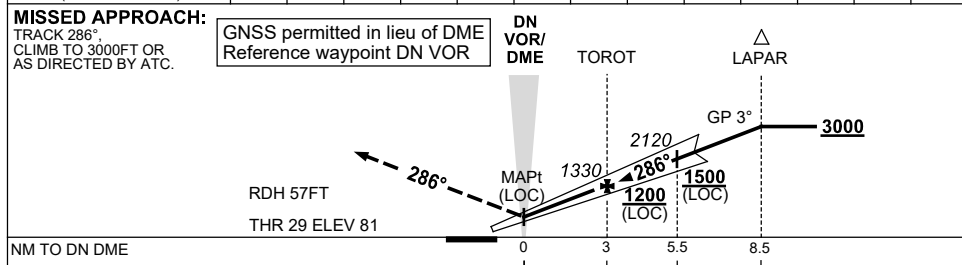
USE QNH

ILS-X or LOC-X RWY 29
DARWIN, NT (YPDN)

30 NOV 2023



NM TO DN DME	0.5	1	2	3	4	5	5.5	6	7	8	8.2		
ALT (3° APCH PATH)	520	690	1010	1330	1650	1970	2120	2280	2600	2920	3000		



NOTES

1. ACFT MAY BE RADAR VECTORED TO FNA.
- * 2. SPECIAL ALTN MNM 800/4 KM.
3. DME 41X(110.4) NOT TO BE USED WITH THIS PROCEDURE.
- * 4. NO CIRCLING IN SECTOR SW OF RWY 11/29 AND RWY 18/36 BEYOND 2.5NM.

CATEGORY	A	B	C	D
S-I ILS		290 (209) 0.8		
S-I LOC		520 (439-1.6)		
CIRCLING *	700 (597-2.4)		800 (697-4.0)	1000 (897-5.0)
ALTERNATE ‡	(1097-4.4)		(1197-6.0)	(1397-7.0)

Changes: NEW LOGO, Editorial.

PDNII02-177