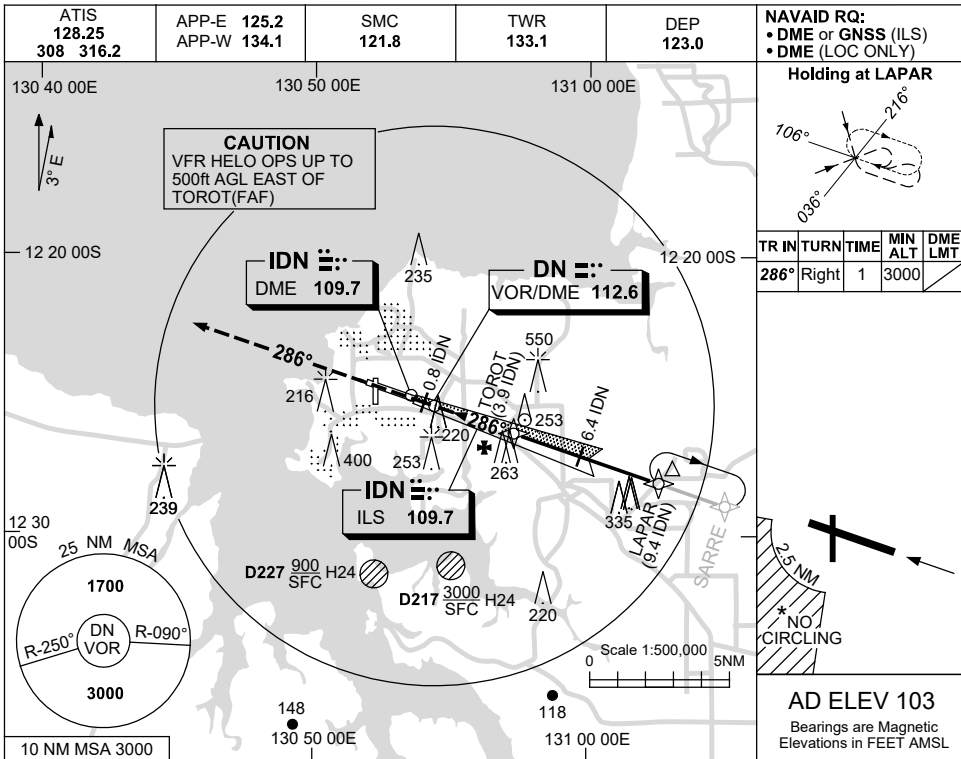


USE QNH

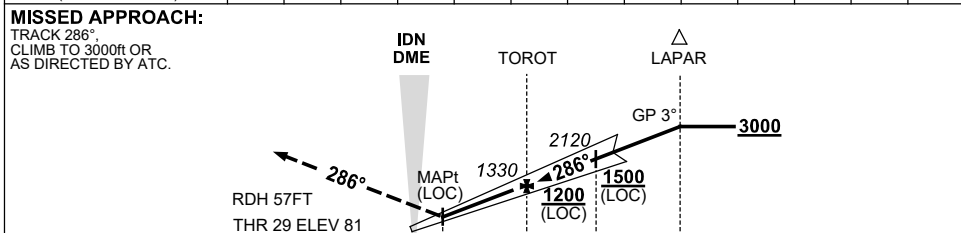
ILS-Z or LOC-Z RWY 29

**DARWIN, NT (YPDN)**

20 MAR 2025



NM TO IDN DME	1.4	2	3	3.9	5	6	6.4	7	8	9	9.2		
ALT (3° APCH PATH)	520	720	1040	1330	1680	2000	2120	2310	2630	2950	3000		



NM TO IDN DME												
NM TO THR 29												

**NOTES**

- ACFT MAY BE RADAR VECTORED TO FNA.
- SPECIAL ALTN MNM 800/4 KM.
- DME 71X(112.4) NOT TO BE USED WITH THIS PROCEDURE.
- NO CIRCLING IN SECTOR SW OF RWY 11/29 AND RWY 18/36 BEYOND 2.5NM.

CATEGORY	A	B	C	D/DL
S-I ILS		290 (209) 0.8		
S-I LOC		520 (439-1.6)		
CIRCLING *	700 (597-2.4)		800 (697-4.0)	1000 (897-5.0)
ALTERNATE ‡	(1097-4.4)		(1197-6.0)	(1397-7.0)

Changes: CAT DL.

PDNII01-182