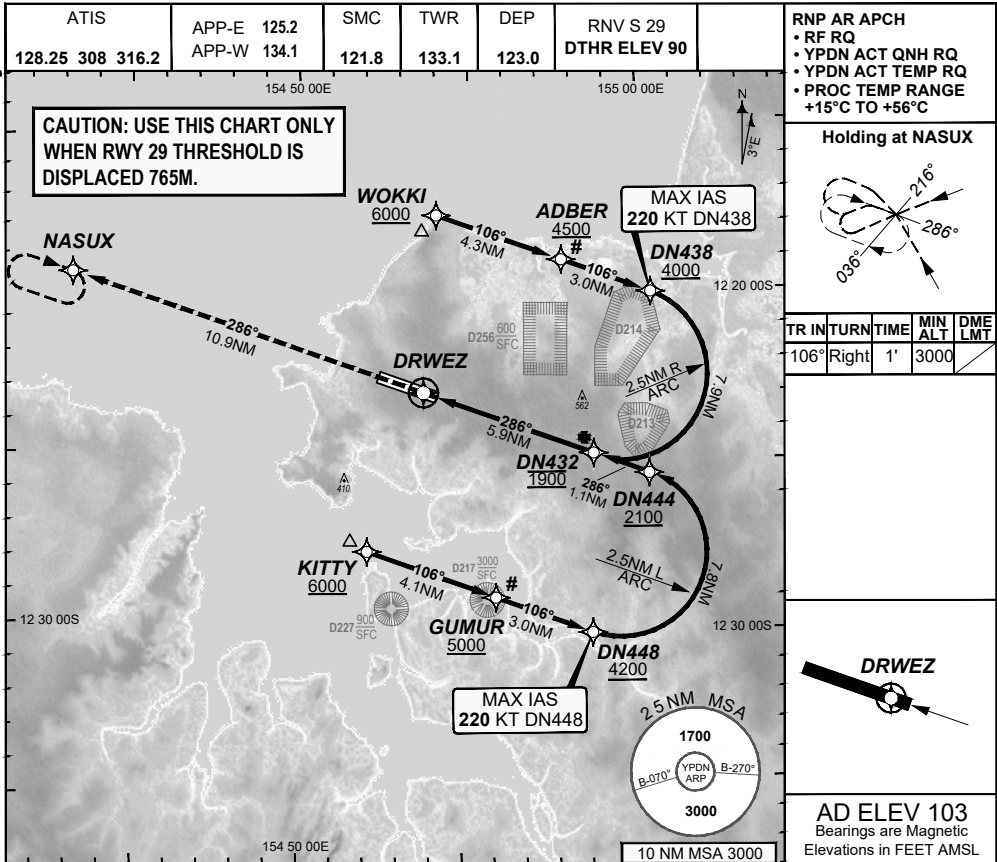


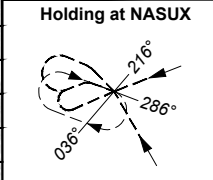
**FOR CASA APPROVED
OPERATORS ONLY
USE QNH**

**RNP S RWY 29 (AR)
DARWIN, NT (YPDN)**

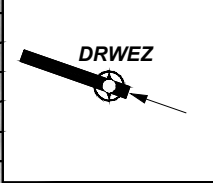
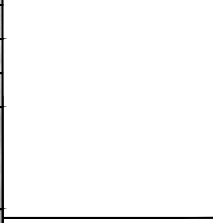
30 NOV 2023



RNP AR APCH
 • RF RQ
 • YPDN ACT QNH RQ
 • YPDN ACT TEMP RQ
 • PROC TEMP RANGE
 +15°C TO +56°C

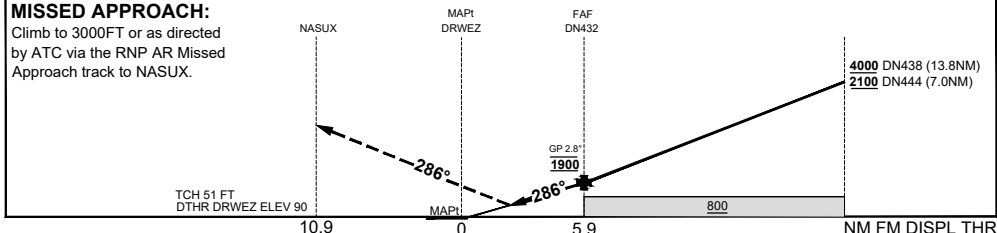


TR IN	TURN	TIME	MIN ALT	DME LMT
106°	Right	1'	3000	



AD ELEV 103
 Bearings are Magnetic
 Elevations in FEET AMSL

	DN432	DN444	DN438
ALT (2.8° APCH PATH)	1900	2227	4248



CATEGORY	A	B	C	D
RNP (0.30)			DA(H) 495 (405 - 2.4) 1.5 HIALS	DA(H) 495 (405 - 2.4) 1.5 HIALS
CIRCLING	N/A		NOT AUTHORISED	NOT AUTHORISED
ALTERNATE				

NOTES

- PAPI not coincident with VPA.
- RNP 0.3 RQ FROM WOKKI TO DN432.
- RNP 0.3 RQ FROM KITTY TO DN432.
- MIN MAP GRAD 4.1% TO 3000FT per ATC.
- 5#. Latest Intercept Point (LIP)

202307250306 COPYRIGHT © GE DIGITAL, 2023. ALL RIGHTS RESERVED. GE PROPRIETARY INFORMATION

Changes: EDITORIAL

PDNGN17-177

DO NOT USE FOR NAVIGATION

© Airservices Australia

Prepared by GE Aviation - ICAO Doc 9905 Compliant

