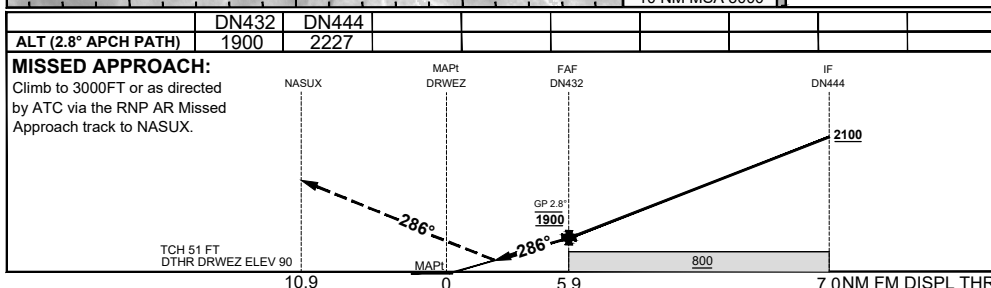
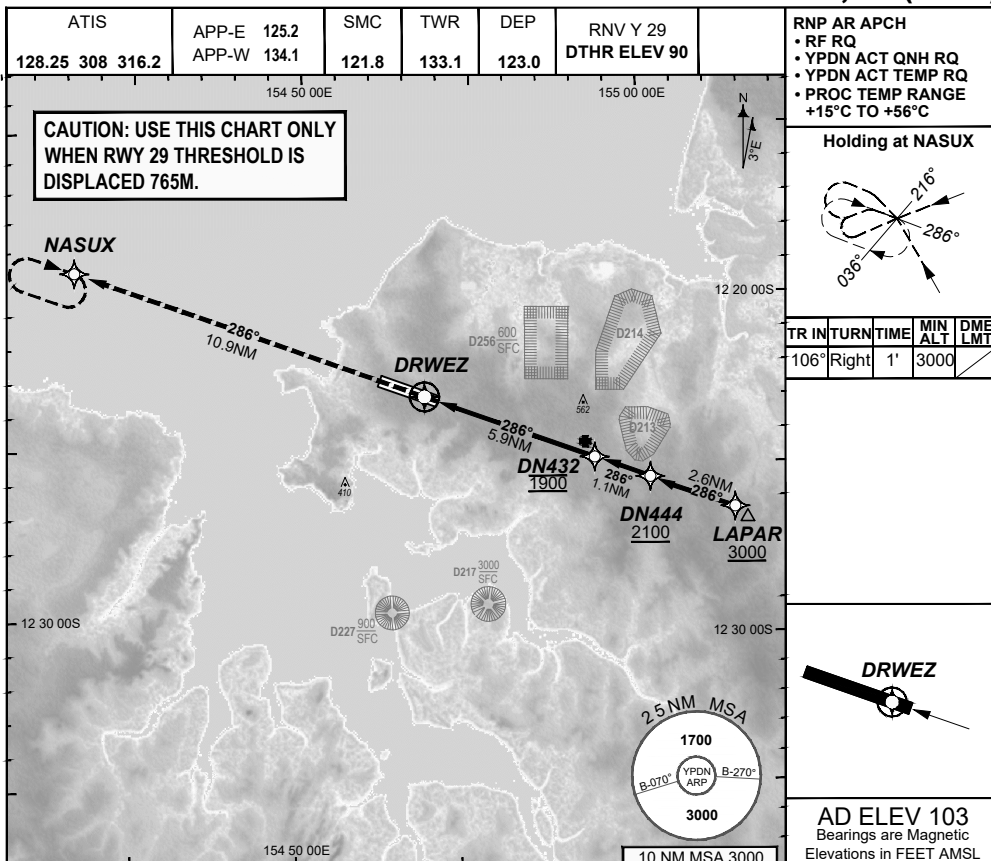


**FOR CASA APPROVED  
OPERATORS ONLY  
USE QNH**

**RNP Y RWY 29 (AR)  
DARWIN, NT (YPDN)**

**30 NOV 2023**



CATEGORY	A	B	C	D
RNP (0.30)	<b>N/A</b>		DA(H) <b>495</b> (405 - 2.4) 1.5 HIALS	DA(H) <b>495</b> (405 - 2.4) 1.5 HIALS
CIRCLING			NOT AUTHORISED	NOT AUTHORISED
ALTERNATE				

- NOTES**
- PAPI not coincident with VPA.
  - RNP 0.3 RQ FROM LAPAR TO DN432.
  - MIN MAP GRAD 4.1% TO 3000FT per ATC.

202307250326 COPYRIGHT © GE DIGITAL, 2023. ALL RIGHTS RESERVED. GE PROPRIETARY INFORMATION

Changes: EDITORIAL

PDNGN13-177

**DO NOT USE FOR NAVIGATION**

© Airservices Australia

Prepared by GE Aviation - ICAO Doc 9905 Compliant

