

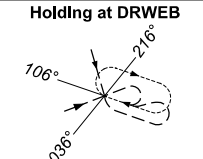
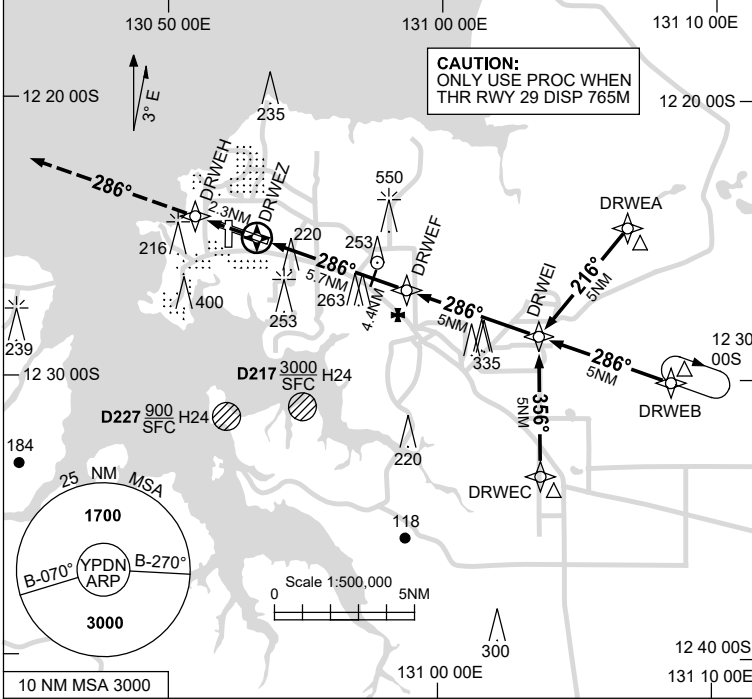
USE QNH

RNP T RWY 29  
**DARWIN, NT (YPDN)**

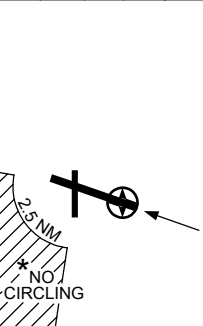
1 DEC 2022

ATIS 128.25 308 316.2	APP-E 125.2 APP-W 134.1	SMC 121.8	TWR 133.1	DEP 123.0
--------------------------	----------------------------	--------------	--------------	--------------

RNP APCH  
 LNAV/VNAV RQMNTS:  
 • YPDN QNH RQ  
 • YPDN TEMP RQ  
 • PROC TEMP RANGE  
 +10°C TO +62°C

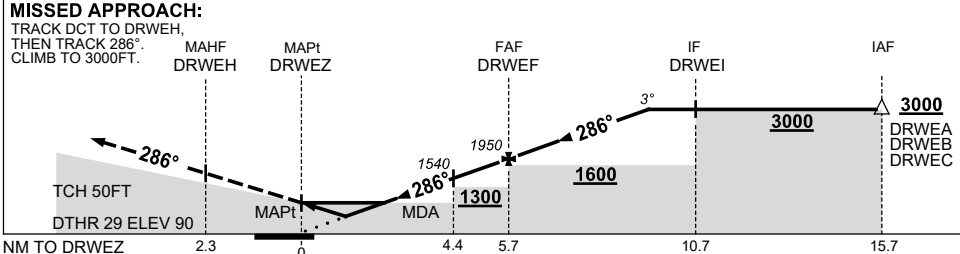


TR IN	TURN	TIME	MIN ALT	DME LMT
286°	Right	1	3000	



**AD ELEV 103**  
 Bearings are Magnetic  
 Elevations in FEET AMSL

NM TO NEXT WPT	DRWEZ	1.0	1.2	2	3	4.4	5	DRWEF	1	2	3	3.3
ALT (3° APCH PATH)		460	530	780	1100	1540	1730	1950	2270	2590	2900	3000



**NOTES**

CATEGORY	A	B	C	D
LNAV/VNAV		460 (370-2.1)		
LNAV		530 (440-2.5)		
CIRCLING *	700 (597-2.4)		800 (697-4.0)	1000 (897-5.0)
ALTERNATE	(1097-4.4)		(1197-6.0)	(1397-7.0)

- MAX IAS: INITIAL : 210KT.
- \* 2. NO CIRCLING IN SECTOR SW OF RWY 11/29 AND RWY 18/36 BEYOND 2.5NM.

Changes: MAG VAR.

PDNGN11-173