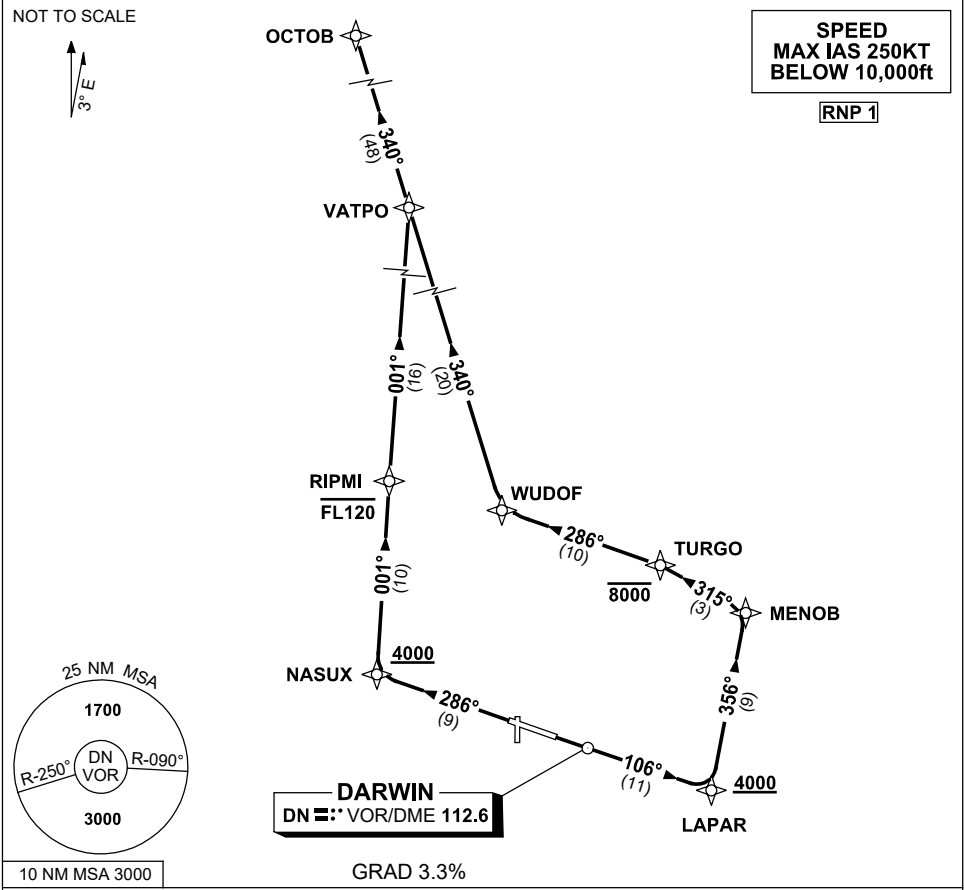


STANDARD INSTRUMENT DEPARTURES (SID)  
 OCTOB EIGHT DEPARTURE (JET) (RNAV)  
**DARWIN, NT (YPDN)**

30 NOV 2023

ATIS 128.25 308 316.2	ACD 126.8	SMC 121.8	TWR 133.1	APP-E 125.2 APP-W 134.1	Bearings are Magnetic Elevations in FEET AMSL
-----------------------------	--------------	--------------	--------------	----------------------------	--



**OCTOB EIGHT DEPARTURE**

**RWY 11**

- Track 106° to LAPAR  
**Cross** LAPAR AT or ABV 4000ft
- Turn LEFT, track 356° to MENOB
- Turn LEFT, track 315° to TURGO  
**Cross** TURGO AT or BLW 8000ft
- Turn LEFT, track 286° to WUDOF
- Turn RIGHT, track 340° to VATPO
- Track 340° to OCTOB

**RWY 29**

- Track 286° to NASUX  
**Cross** NASUX AT or ABV 4000ft
- Turn RIGHT, track 001° to RIPMI  
**Cross** RIPMI AT or BLW FL120
- Track 001° to VATPO
- Turn LEFT track 340° to OCTOB

Changes: RIPMI REPLACES PORKY, VATPO REPLACES TUMBL, VALIDITY NUMBER, Editorial.

PDNDP07-177