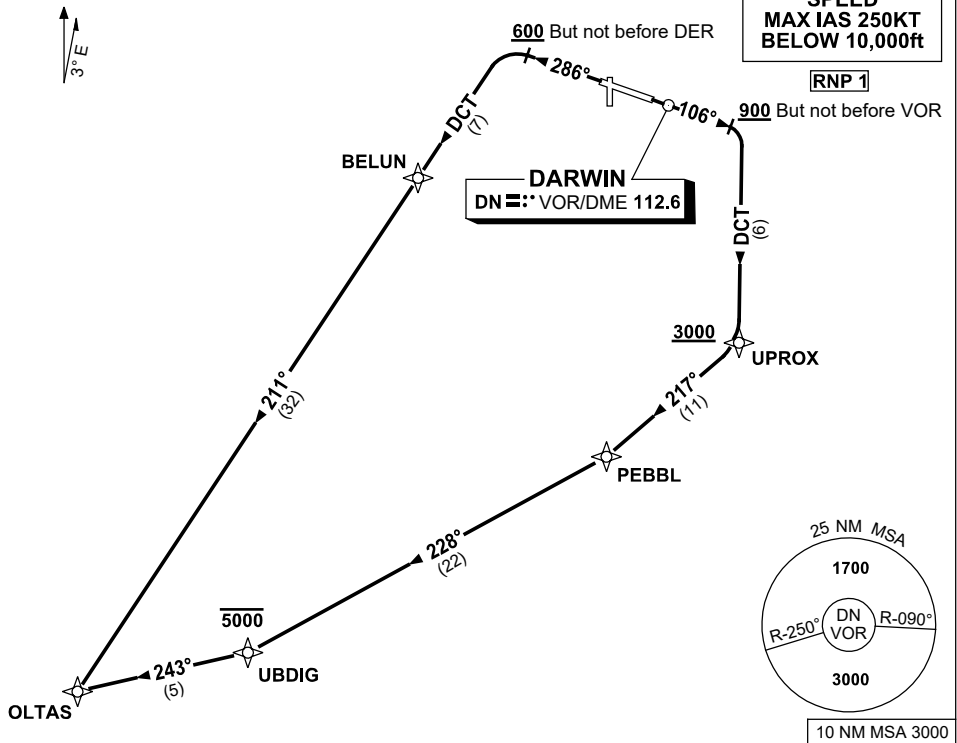


STANDARD INSTRUMENT DEPARTURES (SID)  
 OLTAS ONE DEPARTURE (NON-JET) (RNAV)  
**DARWIN, NT (YPDN)**

30 NOV 2023

ATIS 128.25 308 316.2	ACD 126.8	SMC 121.8	TWR 133.1	APP-E 125.2 APP-W 134.1	Bearings are Magnetic Elevations in FEET AMSL
-----------------------------	--------------	--------------	--------------	----------------------------	--

NOT TO SCALE



**OLTAS ONE DEPARTURE**

**RWY 11**

- GRAD 8.8% to 3000ft, THENCE 3.3%
- Track 106°
- AT or ABV 900ft, but not before VOR turn RIGHT, track DCT to UPROX
- Cross** UPROX AT or ABV 3000ft
- Turn RIGHT, track 217° to PEBBL
- Turn RIGHT track 228° to UBDIG
- Cross** UBDIG AT or BLW 5000ft
- Turn RIGHT, track 243° to OLTAS

**RWY 29**

- GRAD 3.3% (GRAD 7% to 3000ft)
- Track 286°
- AT or ABV 600ft, but not before DER, turn LEFT, track DCT to BELUN
- Track 211° to OLTAS

Changes: OLTAS REPLACES BIRDY, CHART TITLE, Editorial.

PDNDP05-177