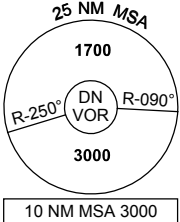


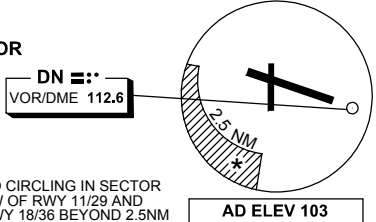
DME or GNSS ARRIVAL PROCEDURES DARWIN, NT (YPDN)

2 MAR 2017

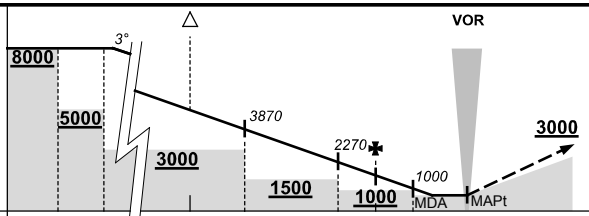
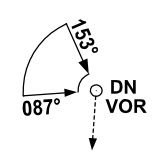
ATIS 128.25 308 316.2	APP-E 125.2 APP-W 134.1	SMC 121.8	TWR 133.1	DEP 123.0	Bearings are Magnetic Elevations in FEET AMSL
------------------------------------	----------------------------	--------------	--------------	--------------	--



DME USING DN DME REFERENCE WAYPOINT DN VOR



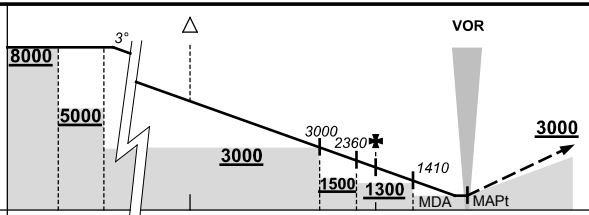
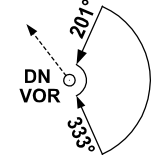
SECTOR A



MISSED APPROACH:
CLIMB ON TRACK TO 3000FT OR AS DIRECTED BY ATC.

NM FM VOR	60	50	30	15	12	7	5	3	0						
CIRCLING MINIMA				A,B: 700-2.4		C: 800-4.0		D: 1000-5.0							
NM FM VOR	25	20	15	10	9	8	7	6	5	4	3	2.4	2		
ALT (3° APCH PATH)	8000	6410	4820	3230	2910	2590	2270	1960	1640	1320	1000	800	700		

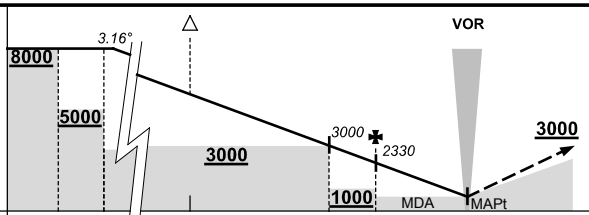
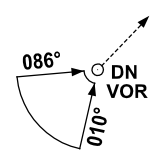
SECTOR B



MISSED APPROACH:
CLIMB ON TRACK TO 3000FT OR AS DIRECTED BY ATC.

NM FM VOR	60	50	30	15	8	6	5	3	0						
CIRCLING MINIMA				A,B: 700-2.4		C: 800-4.0		D: 1000-5.0							
NM FM VOR	23.7	20	15	10	9	8	7	6	5	4	3	2	1.7	1.1	0.8
ALT (3° APCH PATH)	8000	6820	5230	3640	3320	3000	2680	2360	2050	1730	1410	1090	1000	800	700

SECTOR C



MISSED APPROACH:
CLIMB ON TRACK TO 3000FT OR AS DIRECTED BY ATC.

NM FM VOR	60	50	30	15	7	5	0								
CIRCLING MINIMA				A,B: 850-2.4		C: 850-4.0		D: 1000-5.0							
NM FM VOR	21.9	20	15	10	9	8	7	6	5	4	3	2	1	0.3	
ALT(3.16° APCH PATH)	8000	7360	5680	4010	3670	3340	3000	2660	2330	1990	1660	1320	1000	850	

Changes: FROM SUP H159/16.

PDNDG01-150