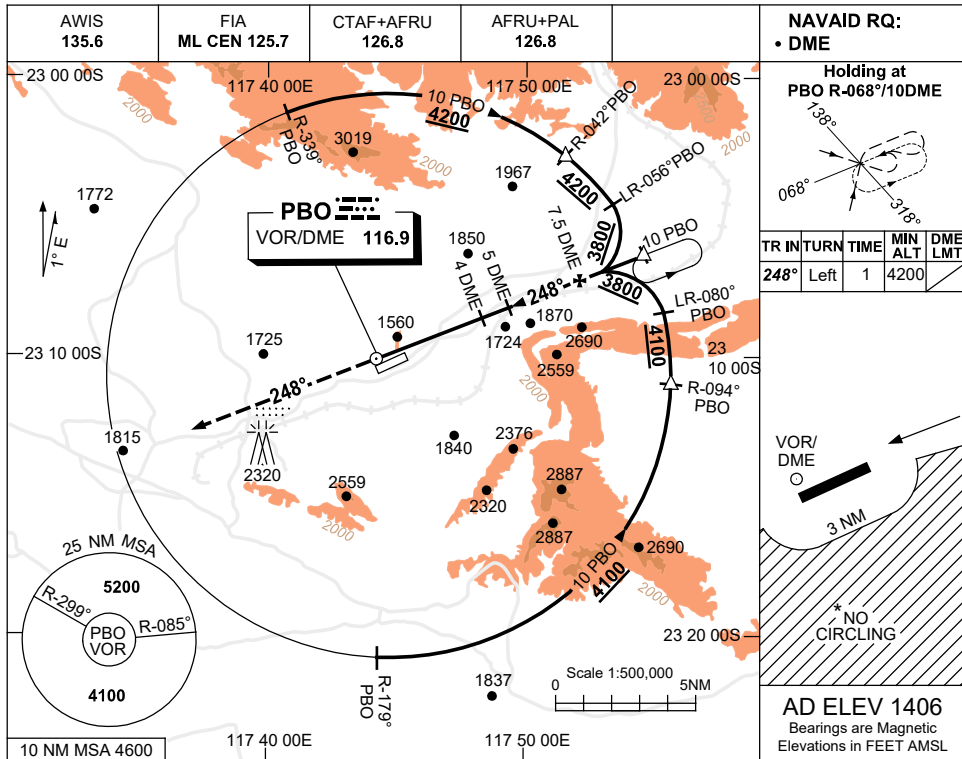


USE QNH

VOR RWY 24  
**PARABURDOO, WA (YPBO)**

23 MAR 2023



**NAVAID RQ:**  
 • DME

**Holding at PBO R-068°/10DME**

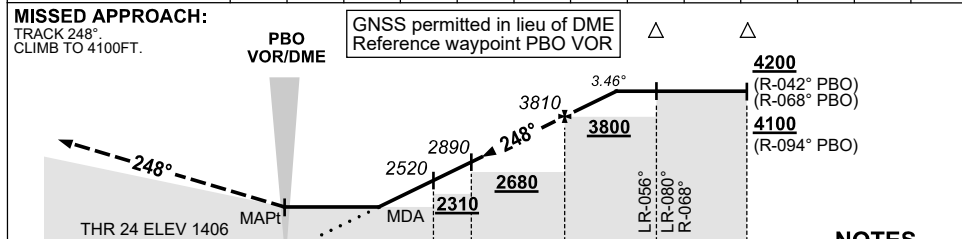
TR IN	TURN	TIME	MIN ALT	DME LMT
248°	Left	1	4200	

VOR/DME 3 NM

\* NO CIRCLING

**AD ELEV 1406**  
 Bearings are Magnetic  
 Elevations in FEET AMSL

DIST BY DME	2.9	3	4	5	6	7	7.5	8	8.6				
ALT (3.46° APCH PATH)	2100	2150	2520	2890	3260	3620	3810	3990	4200				



**NOTES**

- MAX IAS:  
 HOLDING: 210KT.  
 INITIAL : 210KT.
- NO CIRCLING S OF RWY 06/24 BEYOND 3NM.
- APCH PATH ANGLE DOES NOT COINCIDE WITH PAPl ON GLIDE SLOPE INDICATION.
- COLOUR: SEE SPEC NOTICES.

CATEGORY	A	B	C	D
S-I VOR/DME	2100 (694-3.5)			
CIRCLING*	2340 (934-2.4)	2500 (1094-4.0)	2570 (1164-5.0)	
ALTERNATE	(1434-4.4)	(1594-6.0)	(1664-7.0)	

Changes: UNICOM REMOVED.

PBOV002-174