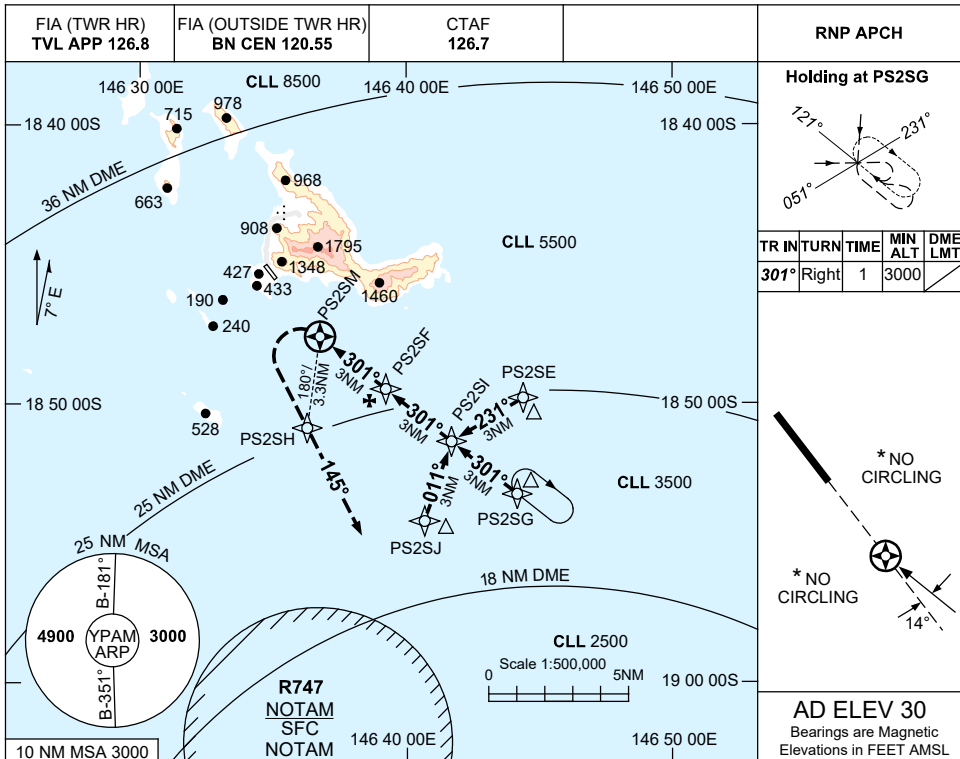


USE QNH

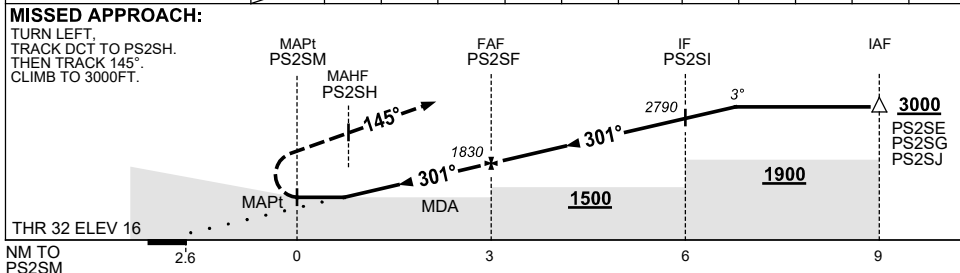
RNP Y RWY 32

PALM ISLAND, QLD (YPAM)

7 SEP 2023



NM TO NEXT WPT	PS2SM	1	2	PS2SF	1	2	PS2SI	0.7			
ALT (3° APCH PATH)		1200	1520	1830	2150	2470	2790	3000			



NOTES

- * 1. NO CIRCLING OR VAA-H AVBL.
- 2. COLOUR: SEE SPEC NOTICES.

CATEGORY	H
LNAV	870 (854-5.0)
CIRCLING *	NOT APPLICABLE
ALTERNATE	NOT APPLICABLE

Changes: MSA, WPT NAMING CONVENTION, MINIMA, GRID COORD FORMAT, Editorial.

PAMGN03-176