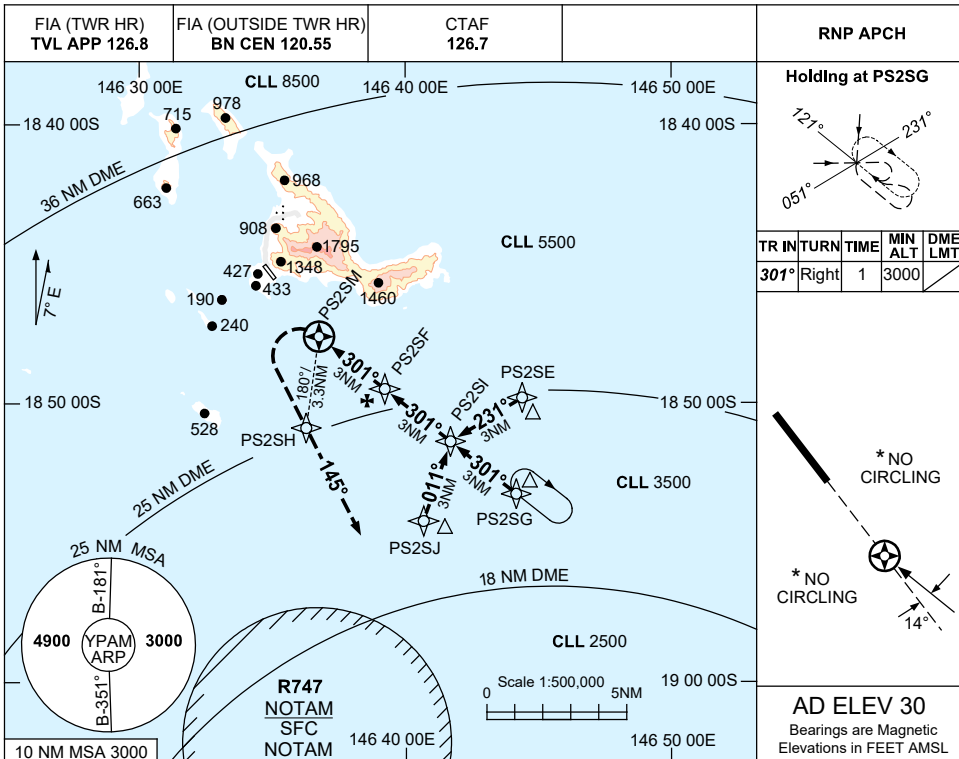


USE QNH

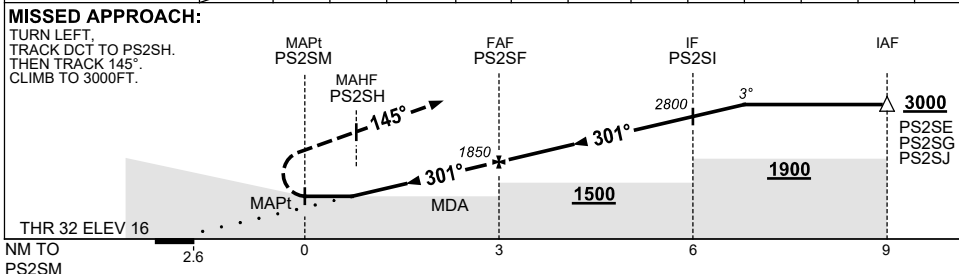
RNP Z RWY 32

PALM ISLAND, QLD (YPAM)

7 SEP 2023



NM TO NEXT WPT	PS2SM	1	2	PS2SF	1	2	PS2SI	0.6				
ALT (3° APCH PATH)		1210	1530	1850	2170	2490	2800	3000				



NOTES

CATEGORY	A	B	C	D
LNAV	890 (874-5.0)		NOT APPLICABLE	
CIRCLING*	NOT AUTHORISED			
ALTERNATE	NOT APPLICABLE			

1. MAX IAS:
INITIAL : 170KT.
MAP TURN: 130KT.
- * 2. NO CIRCLING
3. **COLOUR:** SEE SPEC NOTICES.

Changes: MSA, WPT NAMING CONVENTION, MINIMA, VPA, Editorial.

PAMGN02-176