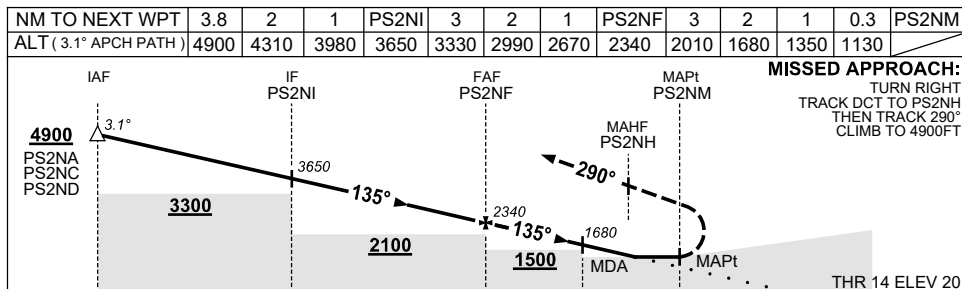
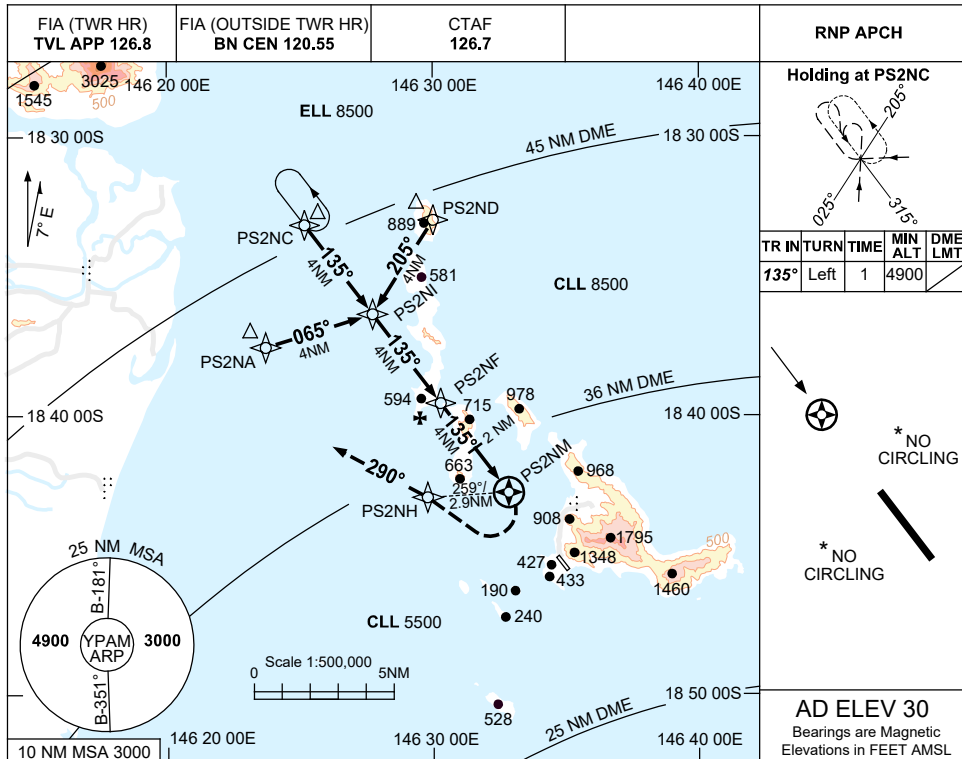


USE QNH

RNP RWY 14

7 SEP 2023

PALM ISLAND, QLD (YPAM)



NM TO PS2NM	12	8	4	2	0	2.9
-------------	----	---	---	---	---	-----

CATEGORY	A	B	C	D
LNAV	1130 (1110-5.0)		NOT APPLICABLE	
CIRCLING*	NOT AUTHORISED			
ALTERNATE	NOT APPLICABLE			

NOTES

- MAX IAS:
MAP TURN: 130KT.
- NO CIRCLING
- COLOUR: SEE SPEC NOTICES.
- HOLD AND MISSED APCH OVERLAP WITH YIGM RNP E. ACFT SEPARATION NOT ASSURED.

Changes: MSA, WPT NAMING CONVENTION, NOTE 4, Editorial.

PAMGN01-176