

**STANDARD INSTRUMENT ARRIVAL (STAR)
ALEXI THREE X-RAY ARRIVAL (RNAV)
ADELAIDE, SA (YPAD)**

1 DEC 2022

ATIS 116.4 134.5	APP 118.2	TWR 120.5	SMC 121.7	Bearings are Magnetic Elevations in FEET AMSL
---------------------	--------------	--------------	--------------	--

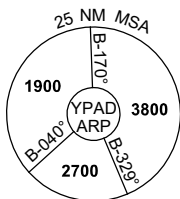
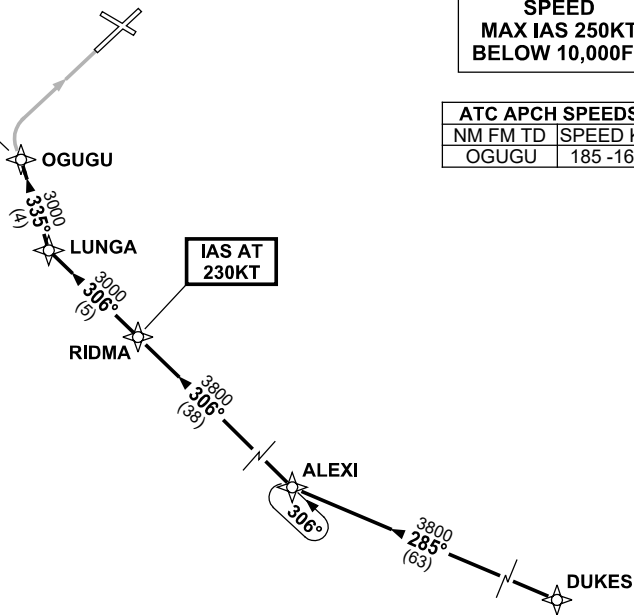
NOT TO SCALE



**MAX IAS
185KT**

**SPEED
MAX IAS 250KT
BELOW 10,000FT**

ATC APCH SPEEDS	
NM	FM TD SPEED KT
OGUGU	185 -160



10 NM MSA 3800

TRANSITION:

DUKES: From DUKES track 285° to ALEXI
 Then follow ARRIVAL instructions

ARRIVAL: ALEXI THREE

RWY 05 XRAY:

- From ALEXI turn RIGHT, track 306° to RIDMA
IAS AT 230KT from RIDMA
- Track 306° to LUNGA
- Turn RIGHT, track 335° to OGUGU
MAX IAS 185KT from OGUGU
- Track via RNP X RWY 05 (AR)

**COMMUNICATIONS FAILURE: PROCEDURE IN IMC
IF ABLE CTC AD APP 03-9235-2012**

- Squawk 7600, comply with vertical navigation requirements, but not below MSA.
- Track via the latest STAR clearance to the nominated runway, then fly the most suitable approach in accordance with ERSA EMERG Section 1.5.

Changes: Editorial.

PADSR33-173