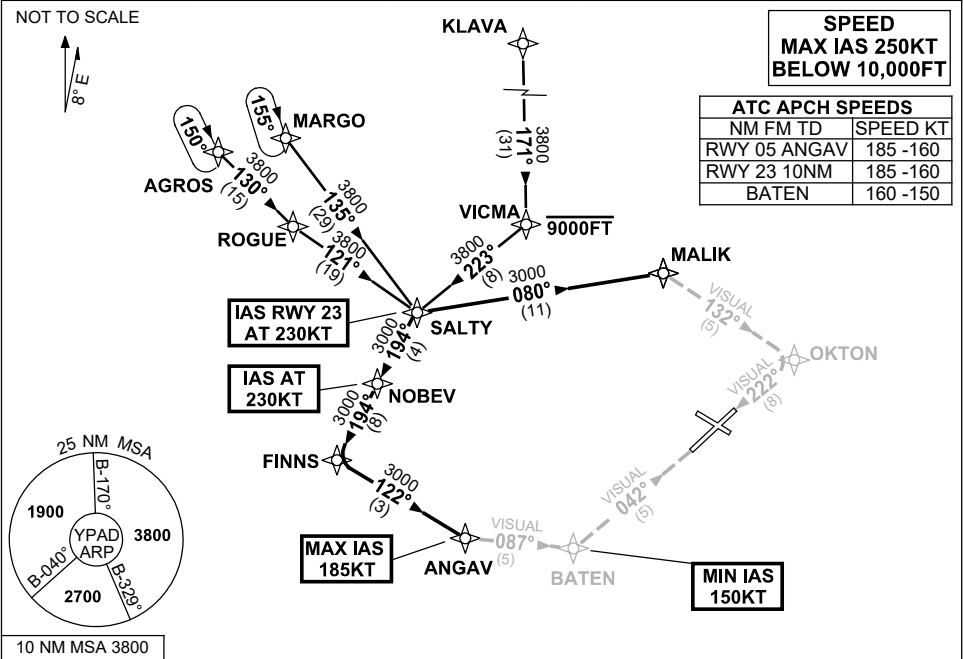


**STANDARD INSTRUMENT ARRIVAL (STAR)
SALTY THREE VICTOR ARRIVAL (RNAV)
ADELAIDE, SA (YPAD)**

17 JUN 2021

ATIS 116.4 134.5	APP 124.2	TWR 120.5	SMC 121.7	Bearings are Magnetic Elevations in FEET AMSL
---------------------	--------------	--------------	--------------	--



TRANSITIONS:

MARGO: From MARGO to SALTY:
Track 135° to SALTY
Then follow ARRIVAL instructions

AGROS: From AGROS to SALTY:
Track 130° to ROGUE
Turn LEFT, track 121° to SALTY
Then follow ARRIVAL instructions

KLAVA: From KLAVA to SALTY:
Track 171° to VICMA
Cross VICMA AT or BLW 9000FT
Turn RIGHT, track 223° to SALTY
Then follow ARRIVAL instructions

ARRIVAL: SALTY THREE

RWY 05 VICTOR:

- From SALTY turn RIGHT, track 194° to NOBEV
IAS AT 230KT from NOBEV
- Track 194° to FINNS
- Turn LEFT, track 122° to ANGAV
MAX IAS 185KT from ANGAV
- Turn LEFT, track 087° VISUAL to BATEN
MIN IAS 150KT from BATEN
- Turn LEFT, intercept VISUAL final RWY 05

RWY 23 VICTOR: (HJ ONLY)

- IAS AT 230KT from SALTY
- From SALTY turn LEFT, track 080° to MALIK
- Turn RIGHT, track 132° VISUAL to OKTON
- Turn RIGHT, intercept VISUAL final RWY 23

**COMMUNICATIONS FAILURE: PROCEDURE IN IMC
IF ABLE CTC AD APP 03-9235-2012**

- Squawk 7600, comply with vertical navigation requirements, but not below MSA.
- Track via the latest STAR clearance to the nominated runway, then fly the most suitable approach in accordance with ERSA EMERG Section 1.5.

Changes: Editorial.

PADSR30-167