

**STANDARD INSTRUMENT ARRIVAL (STAR)  
DRINA NINE VICTOR ARRIVAL (RNAV)  
ADELAIDE, SA (YPAD)**

**17 JUN 2021**

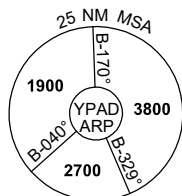
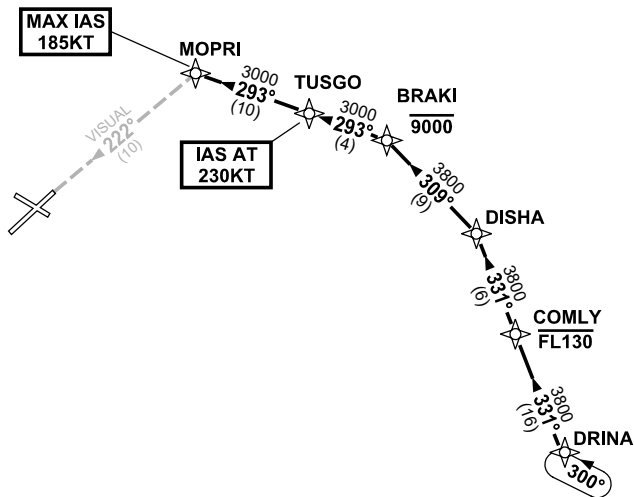
ATIS 116.4 134.5	APP 118.2	TWR 120.5	SMC 121.7	Bearings are Magnetic Elevations in FEET AMSL
---------------------	--------------	--------------	--------------	--

NOT TO SCALE



ATC APCH SPEEDS	
NM FM TD	SPEED KT
MOPRI	185 -160
5	160 -150

**SPEED  
MAX IAS 250KT  
BELOW 10,000FT**



10 NM MSA 3800

**ARRIVAL: DRINA NINE**

**RWY 23 VICTOR:**

- From DRINA track 331° to COMLY
- Cross** COMLY AT or BLW FL130
- Track 331° to DISHA
- Turn LEFT, track 309° to BRAKI
- Cross** BRAKI AT or BLW 9000FT
- Turn LEFT, track 293° to TUSGO
- IAS AT 230KT** from TUSGO
- Track 293° to MOPRI
- MAX IAS 185KT from MOPRI
- Turn LEFT, intercept VISUAL final RWY 23

**COMMUNICATIONS FAILURE: PROCEDURE IN IMC  
IF ABLE CTC AD APP 03-9235-2012**

- Squawk 7600, comply with vertical navigation requirements, but not below MSA.
- Track via the latest STAR clearance to the nominated runway, then fly the most suitable approach in accordance with ERS A EMERG Section 1.5.