

**STANDARD INSTRUMENT ARRIVAL (STAR)  
BLACK THREE VICTOR ARRIVAL (RNAV)  
ADELAIDE, SA (YPAD)**

17 JUN 2021

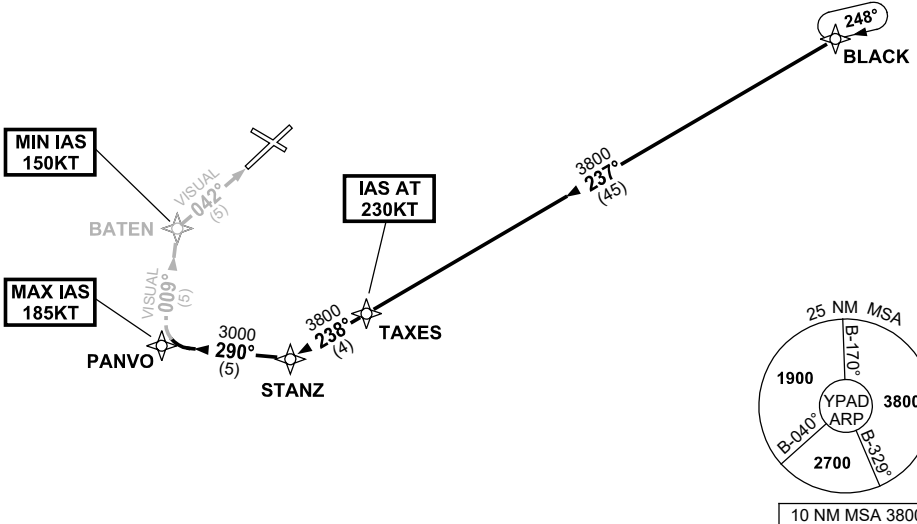
ATIS 116.4 134.5	APP (SE) 118.2	TWR 120.5	Bearings are Magnetic Elevations in FEET AMSL
---------------------	-------------------	--------------	--

NOT TO SCALE



ATC APCH SPEEDS	
NM FM TD	SPEED KT
PANVO	185 -160
BATEN	160 -150

<b>SPEED</b> <b>MAX IAS 250KT</b> <b>BELOW 10,000FT</b>
---



**ARRIVAL: BLACK THREE**

**RWY 05 VICTOR:**

- From BLACK track 237° to TAXES  
**IAS AT 230KT** from TAXES
- Track 238° to STANZ
- Turn RIGHT, track 290° to PANVO  
**MAX IAS 185KT** from PANVO
- Turn RIGHT, track 009° VISUAL to BATEN  
**MIN IAS 150KT** from BATEN
- Turn RIGHT, intercept VISUAL final RWY 05

**COMMUNICATIONS FAILURE: PROCEDURE IN IMC  
IF ABLE CTC AD APP 03-9235-2012**

- Squawk 7600, comply with vertical navigation requirements, but not below MSA.
- Track via the latest STAR clearance to the nominated runway, then fly the most suitable approach in accordance with ERSA EMERG Section 1.5.