

**STANDARD INSTRUMENT ARRIVAL (STAR)
ALEXI THREE VICTOR ARRIVAL (RNAV)
ADELAIDE, SA (YPAD)**

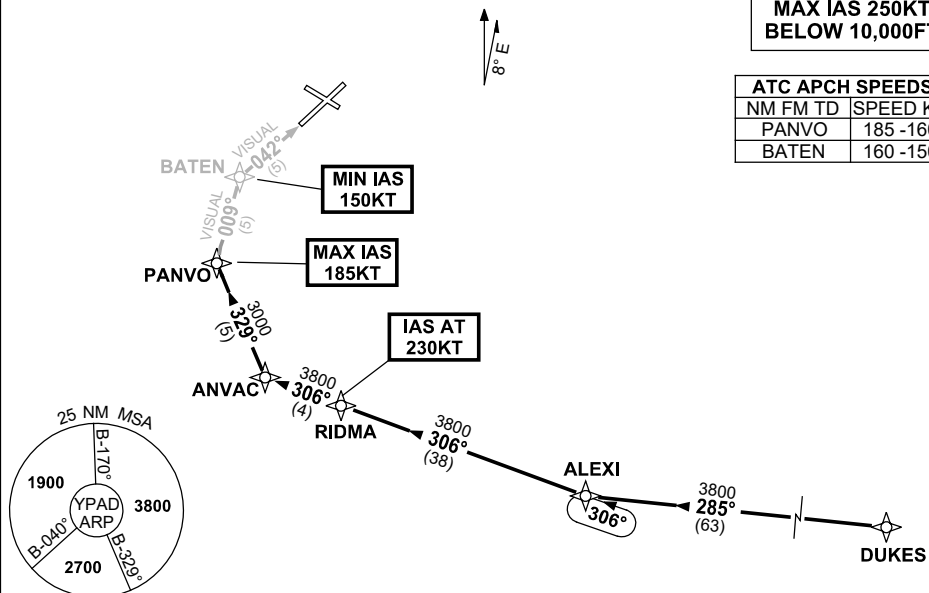
17 JUN 2021

ATIS 116.4 134.5	APP 118.2	TWR 120.5	SMC 121.7	Bearings are Magnetic Elevations in FEET AMSL
---------------------	--------------	--------------	--------------	--------------------------------------------------

NOT TO SCALE

**SPEED
MAX IAS 250KT
BELOW 10,000FT**

ATC APCH SPEEDS	
NM FM TD	SPEED KT
PANVO	185-160
BATEN	160-150



10 NM MSA 3800

TRANSITION:

DUKES: From DUKES track 285° to ALEXI
Then follow ARRIVAL instructions

ARRIVAL: ALEXI THREE

RWY 05 VICTOR:

- From ALEXI turn RIGHT, track 306° to RIDMA
IAS AT 230KT from RIDMA
- Track 306° to ANVAC
- Turn RIGHT, track 329° to PANVO
MAX IAS 185KT from PANVO
- Turn RIGHT, track 009° VISUAL to BATEN
MIN IAS 150KT from BATEN
- Turn RIGHT, Intercept VISUAL final RWY 05

**COMMUNICATIONS FAILURE: PROCEDURE IN IMC
IF ABLE CTC AD APP 03-9235-2012**

- Squawk 7600, comply with vertical navigation requirements, but not below MSA.
- Track via the latest STAR clearance to the nominated runway, then fly the most suitable approach in accordance with ERS A EMERG Section 1.5.

Changes: Editorial.

PADSR26-167