

**STANDARD INSTRUMENT ARRIVAL (STAR)  
RIKAB EIGHT WHISKEY ARRIVALS (RNAV)  
ADELAIDE, SA (YPAD)**

**1 DEC 2022**

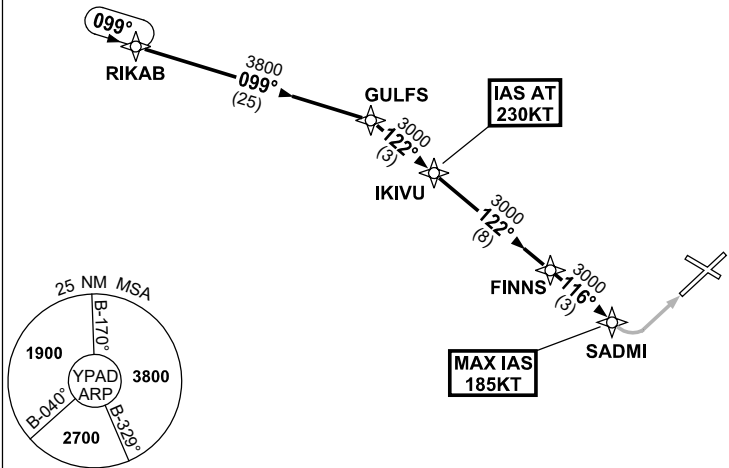
ATIS 116.4 134.5	APP 124.2	TWR 120.5	SMC 121.7	Bearings are Magnetic Elevations in FEET AMSL
---------------------	--------------	--------------	--------------	--

NOT TO SCALE



ATC APCH SPEEDS	
NM FM TD	SPEED KT
SADMI	185 -160

**SPEED  
MAX IAS 250KT  
BELOW 10,000FT**



10 NM MSA 3800

**ARRIVAL: RIKAB EIGHT**

**RWY 05 WHISKEY:**

- Track 099° to GULFS
- Turn RIGHT, track 122° to IKIVU
- **IAS AT 230KT** from IKIVU
- Track 122° to FINNS
- From FINNS turn LEFT track 116° to SADMI
- **MAX IAS 185KT** from SADMI
- Track via RNP W RWY 05 (AR)

**COMMUNICATIONS FAILURE: PROCEDURE IN IMC  
IF ABLE CTC AD APP 03-9235-2012**

- Squawk 7600, comply with vertical navigation requirements, but not below MSA.
- Track via the latest STAR clearance to the nominated runway, then fly the most suitable approach in accordance with ERSA EMERG Section 1.5.

Changes: Editorial.

PADSR18-173