

**STANDARD INSTRUMENT ARRIVAL (STAR)
ELROX FIVE VICTOR ARRIVAL (NON-JET) (RNAV)
ADELAIDE, SA (YPAD)**

28 NOV 2024

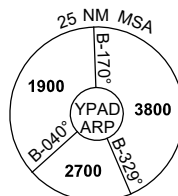
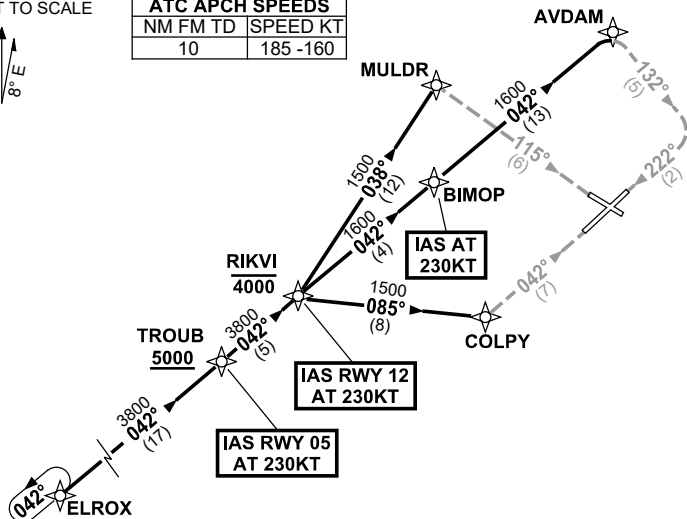
ATIS 116.4 134.5	APP 124.2	TWR 120.5	SMC 121.7	Bearings are Magnetic Elevations in FEET AMSL
---------------------	--------------	--------------	--------------	--

NOT TO SCALE



ATC APCH SPEEDS	
NM	FM TD SPEED KT
10	185 -160

**SPEED
MAX IAS 250KT
BELOW 10,000ft**



10 NM MSA 3800

ARRIVAL:

ELROX FIVE

From ELROX track 042° to TROUB
Cross TROUB AT or ABV 5000ft, then

RWY 05 VICTOR:

IAS AT 230KT from TROUB
From TROUB, track 042° to RIKVI
Cross RIKVI AT or BLW 4000ft
• Turn RIGHT, track 085° to COLPY
• Turn LEFT, track 042° VISUAL for final RWY 05

RWY 12 VICTOR:

From TROUB, track 042° to RIKVI
Cross RIKVI AT or BLW 4000ft
IAS AT 230KT from RIKVI
• Track 038° to MULDR
• Turn RIGHT, track 115° VISUAL for final RWY 12

RWY 23 VICTOR:

From TROUB, track 042° to RIKVI
Cross RIKVI AT or BLW 4000ft
• Track 042° to BIMOP
IAS AT 230KT from BIMOP
• Track 042° to AVDAM
• Turn RIGHT, track 132° VISUAL to intercept final RWY 23

NOTE: When instrument APCH required, expect radar vectors after RIKVI to IAF for appropriate instrument APCH

**COMMUNICATIONS FAILURE: PROCEDURE IN IMC
IF ABLE CTC AD APP 03-9235-2012**

- Squawk 7600, comply with vertical navigation requirements, but not below MSA.
- Track via the latest STAR clearance to the nominated runway, then fly the most suitable approach in accordance with ERSA EMERG Section 1.5.

Changes: WAYPOINT NAMES, VALIDITY INDICATOR.

PADSR14-131