

**STANDARD INSTRUMENT ARRIVAL (STAR)
ELROX FOUR VICTOR ARRIVAL (NON-JET) (RNAV)
ADELAIDE, SA (YPAD)**

17 JUN 2021

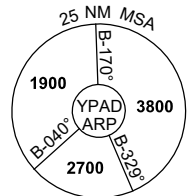
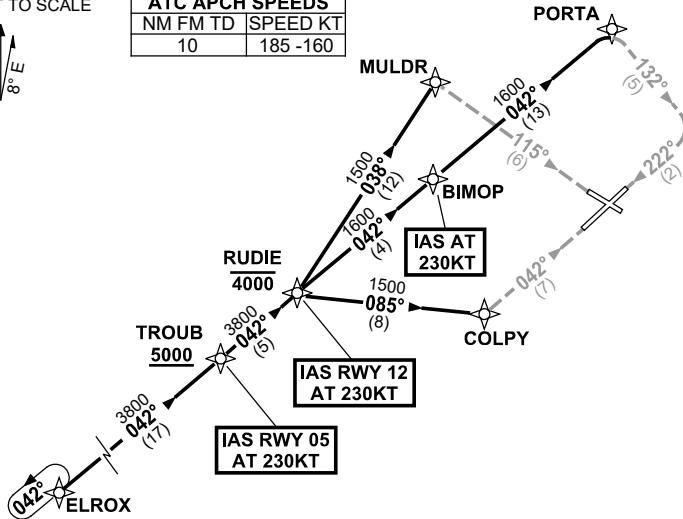
| | | | | |
|---------------------|--------------|--------------|--------------|--|
| ATIS 116.4 134.5 | APP 124.2 | TWR 120.5 | SMC 121.7 | Bearings are Magnetic Elevations in FEET AMSL |
|---------------------|--------------|--------------|--------------|--|

NOT TO SCALE



| ATC APCH SPEEDS | |
|-----------------|----------|
| NM | FM TD |
| 10 | 185 -160 |

**SPEED
MAX IAS 250KT
BELOW 10,000FT**



10 NM MSA 3800

ARRIVAL:

ELROX FOUR

From ELROX track 042° to TROUB
Cross TROUB AT or ABV 5000FT, then

RWY 05 VICTOR:

IAS AT 230KT from TROUB
From TROUB, track 042° to RUDIE
Cross RUDIE AT or BLW 4000FT
• Turn **RIGHT**, track 085° to COLPY
• Turn **LEFT**, track 042° **VISUAL** for final RWY 05

RWY 12 VICTOR:

From TROUB, track 042° to RUDIE
Cross RUDIE AT or BLW 4000FT
IAS AT 230KT from RUDIE
• Track 038° to MULDR
• Turn **RIGHT**, track 115° **VISUAL** for final RWY 12

RWY 23 VICTOR:

From TROUB, track 042° to RUDIE
Cross RUDIE AT or BLW 4000FT
• Track 042° to BIMOP
IAS AT 230KT from BIMOP
• Track 042° to PORTA
• Turn **RIGHT**, track 132° **VISUAL** to intercept final RWY 23

NOTE: When instrument APCH required, expect radar vectors after RUDIE to IAF for appropriate instrument APCH

**COMMUNICATIONS FAILURE: PROCEDURE IN IMC
IF ABLE CTC AD APP 03-9235-2012**

- Squawk 7600, comply with vertical navigation requirements, but not below MSA.
- Track via the latest STAR clearance to the nominated runway, then fly the most suitable approach in accordance with ERSA EMERG Section 1.5.