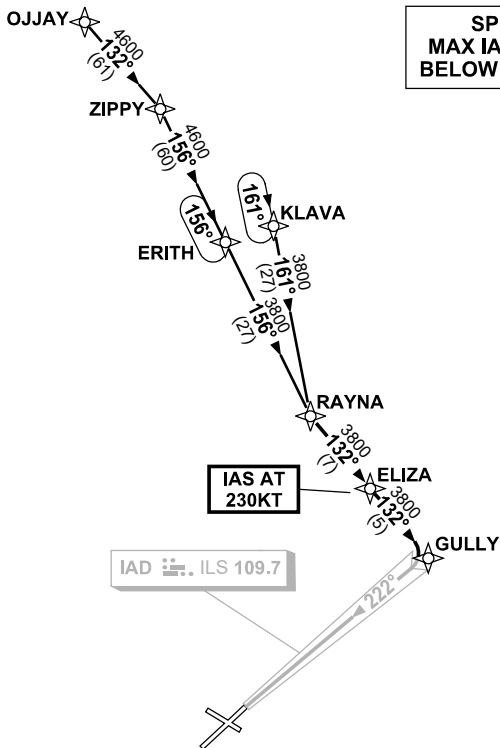


**STANDARD INSTRUMENT ARRIVAL (STAR)
RAYNA TWO ALPHA, ZULU ARRIVALS (RNAV)
ADELAIDE, SA (YPAD)**

1 DEC 2022

| | | | | |
|---------------------|--------------|--------------|--------------|--------------------------------------------------|
| ATIS 116.4 134.5 | APP 128.6 | TWR 120.5 | SMC 121.7 | Bearings are Magnetic Elevations in FEET AMSL |
|---------------------|--------------|--------------|--------------|--------------------------------------------------|

NOT TO SCALE



10 NM MSA 3800

TRANSITIONS:

OJJAY: From OJJAY to RAYNA
Track 132° to ZIPPY
Turn RIGHT, track 156° to ERITH
Track 156° RAYNA
Then follow ARRIVAL instructions

KLAVA: From KLAVA to RAYNA
Track 161° to RAYNA
Then follow ARRIVAL instructions

ARRIVAL: RAYNA TWO

RWY 23 ALPHA:

- From RAYNA track 132° to ELIZA
- IAS AT 230KT** from ELIZA
- Track 132° to GULLY
- Turn RIGHT, intercept LOC RWY 23

RWY 23 ZULU:

- From RAYNA track 132° to ELIZA
- IAS AT 230KT** from ELIZA
- Track 132° to GULLY
- Track via RNP RWY 23

**COMMUNICATIONS FAILURE: PROCEDURE IN IMC
IF ABLE CTC AD APP 03-9235-2012**

- Squawk 7600, comply with vertical navigation requirements, but not below MSA.
- Track via the latest STAR clearance to the nominated runway, then fly the most suitable approach in accordance with ERSA EMERG Section 1.5.