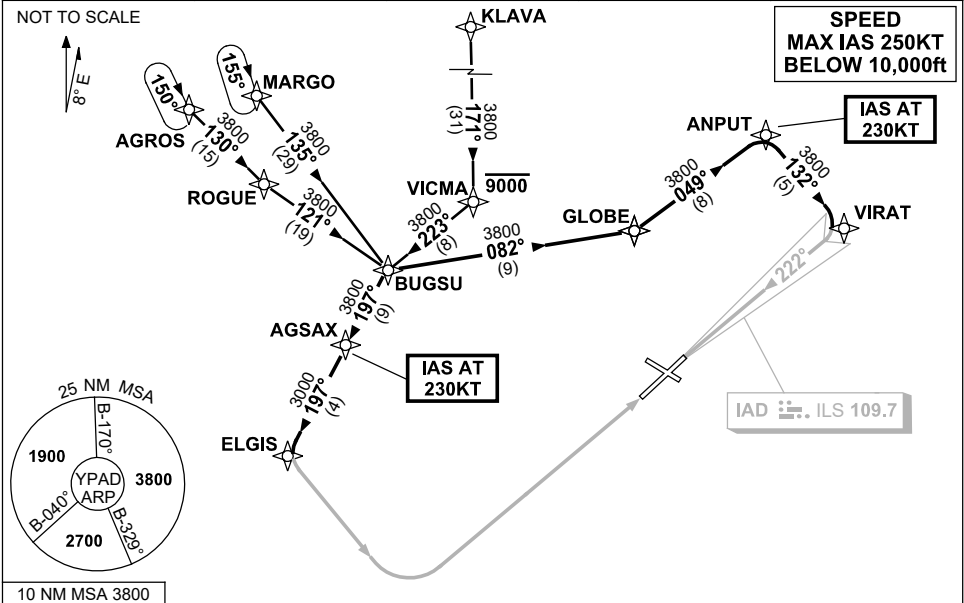


**STANDARD INSTRUMENT ARRIVAL (STAR)  
BUGSU ONE ALPHA, ZULU ARRIVALS (RNAV)  
ADELAIDE, SA (YPAD)**

**28 NOV 2024**

ATIS 116.4 134.5	APP 124.2	TWR 120.5	SMC 121.7	Bearings are Magnetic Elevations in FEET AMSL
---------------------	--------------	--------------	--------------	--



**TRANSITIONS:**

**MARGO:** From MARGO to BUGSU:  
Track 135° to BUGSU  
Then follow ARRIVAL instructions

**AGROS:** From AGROS to BUGSU:  
Track 130° to ROGUE  
Turn LEFT, track 121° to BUGSU  
Then follow ARRIVAL instructions

**KLAVA:** From KLAVA to BUGSU:  
(RWY 05 ONLY) Track 171° to VICMA  
Cross VICMA AT or BLW 9000ft  
Turn RIGHT, track 223° to BUGSU  
Then follow ARRIVAL instructions

**ARRIVAL: BUGSU ONE**

**RWY 05 ZULU:**

- From BUGSU turn RIGHT, track 197° to AGSAX  
IAS AT 230KT from AGSAX
- Track 197° to ELGIS
- Track via RNP Z RWY 05

**RWY 23 ALPHA:**

- From BUGSU turn LEFT, track 082° to GLOBE
- Turn LEFT, track 049° to ANPUT  
IAS AT 230KT from ANPUT
- Turn RIGHT, track 132° to VIRAT
- Turn RIGHT, intercept LOC RWY 23

**COMMUNICATIONS FAILURE: PROCEDURE IN IMC  
IF ABLE CTC AD APP 03-9235-2012**

- Squawk 7600, comply with vertical navigation requirements, but not below MSA.
- Track via the latest STAR clearance to the nominated runway, then fly the most suitable approach in accordance with ERS A EMERG Section 1.5.

Changes: WAYPOINT NAMES, PROC IDENT.

PADSR05-181