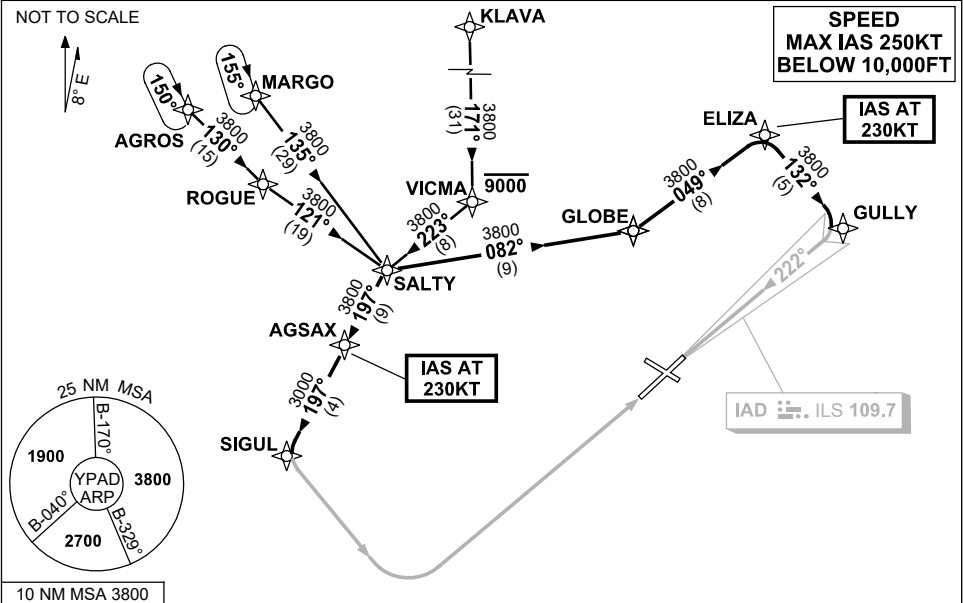


**STANDARD INSTRUMENT ARRIVAL (STAR)
SALTY THREE ALPHA, ZULU ARRIVALS (RNAV)
ADELAIDE, SA (YPAD)**

1 DEC 2022

ATIS 116.4 134.5	APP 124.2	TWR 120.5	SMC 121.7	Bearings are Magnetic Elevations in FEET AMSL
---------------------	--------------	--------------	--------------	--



TRANSITIONS:

MARGO: From MARGO to SALTY:
Track 135° to SALTY
Then follow ARRIVAL instructions

AGROS: From AGROS to SALTY:
Track 130° to ROGUE
Turn LEFT, track 121° to SALTY
Then follow ARRIVAL instructions

KLAVA: From KLAVA to SALTY:
(RWY 05 ONLY) Track 171° to VICMA
Cross VICMA AT or BLW 9000FT
Turn RIGHT, track 223° to SALTY
Then follow ARRIVAL instructions

ARRIVAL: SALTY THREE

RWY 05 ZULU:

- From SALTY turn RIGHT, track 197° to AGSAX
IAS AT 230KT from AGSAX
- Track 197° to SIGUL
- Track via RNP Z RWY 05

RWY 23 ALPHA:

- From SALTY turn LEFT, track 082° to GLOBE
- Turn LEFT, track 049° to ELIZA
IAS AT 230KT from ELIZA
- Turn RIGHT, track 132° to GULLY
- Turn RIGHT, intercept LOC RWY 23

**COMMUNICATIONS FAILURE: PROCEDURE IN IMC
IF ABLE CTC AD APP 03-9235-2012**

- Squawk 7600, comply with vertical navigation requirements, but not below MSA.
- Track via the latest STAR clearance to the nominated runway, then fly the most suitable approach in accordance with ERS A EMERG Section 1.5.

Changes: Editorial.

PADSR05-173