

**STANDARD INSTRUMENT ARRIVAL (STAR)
DRINA NINE ALPHA, ZULU ARRIVALS (RNAV)
ADELAIDE, SA (YPAD)**

1 DEC 2022

ATIS 116.4 134.5	APP 118.2	TWR 120.5	SMC 121.7	Bearings are Magnetic Elevations in FEET AMSL
---------------------	--------------	--------------	--------------	--

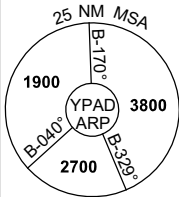
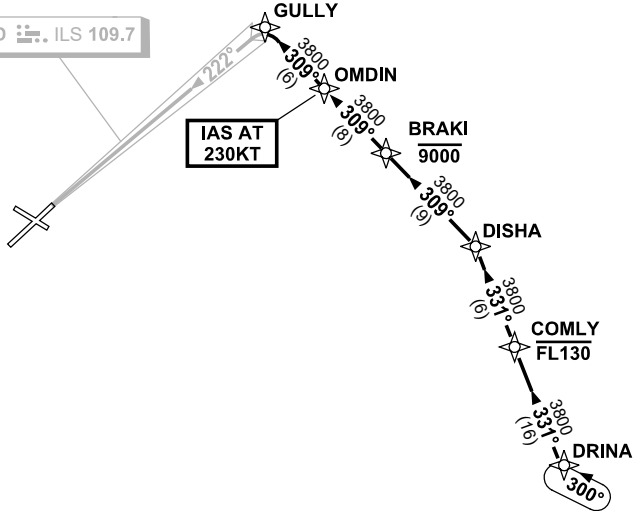
NOT TO SCALE



IAD ILS 109.7

IAS AT
230KT

**SPEED
MAX IAS 250KT
BELOW 10,000FT**



10 NM MSA 3800

ARRIVAL: DRINA NINE

RWY 23 ALPHA:

- From DRINA track 331° to COMLY
- Cross** COMLY AT or BLW FL130
- Track 331° to DISHA
- Turn LEFT, track 309° to BRAKI
- Cross** BRAKI AT or BLW 9000FT
- Track 309° to OMDIN
- IAS AT** 230KT from OMDIN
- Track 309° to GULLY
- Turn LEFT, intercept LOC RWY 23

RWY 23 ZULU:

- From DRINA track 331° to COMLY
- Cross** COMLY AT or BLW FL130
- Track 331° to DISHA
- Turn LEFT, track 309° to BRAKI
- Cross** BRAKI AT or BLW 9000FT
- Track 309° to OMDIN
- IAS AT** 230KT from OMDIN
- Track 309° to GULLY
- Track via RNP RWY 23

**COMMUNICATIONS FAILURE: PROCEDURE IN IMC
IF ABLE CTC AD APP 03-9235-2012**

- Squawk 7600, comply with vertical navigation requirements, but not below MSA.
- Track via the latest STAR clearance to the nominated runway, then fly the most suitable approach in accordance with ERS A EMERG Section 1.5.

Changes: Editorial.

PADSR03-173