

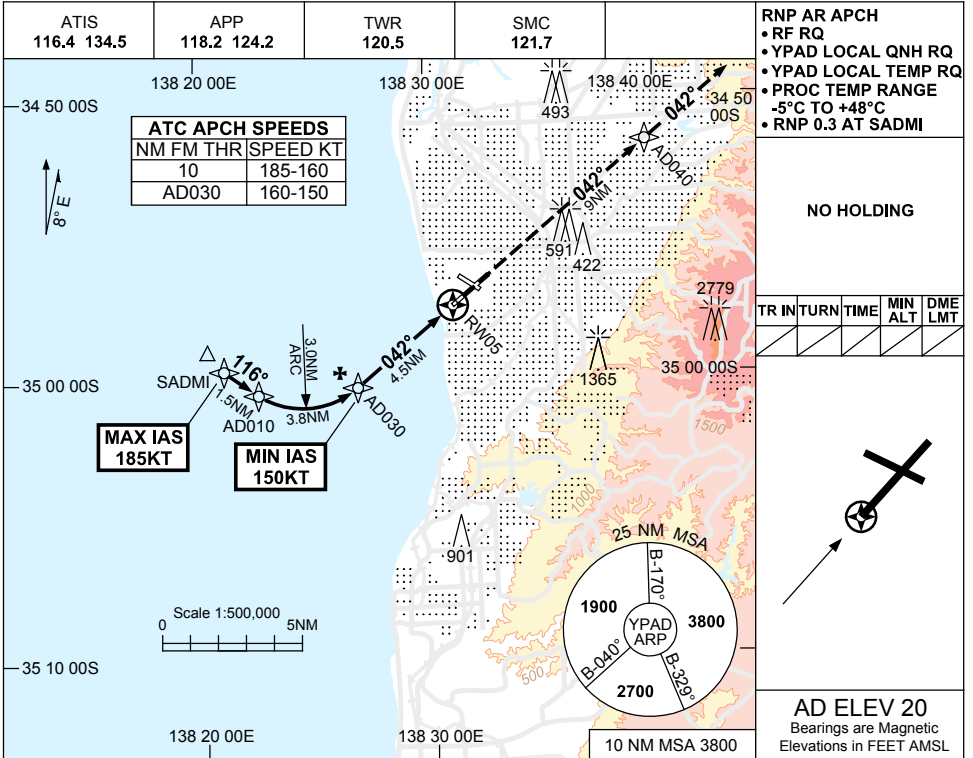
FOR CASA APPROVED OPERATORS ONLY

USE QNH

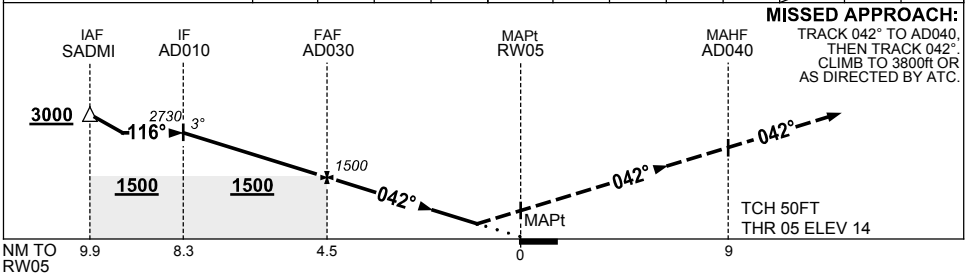
RNP W RWY 05 (AR)

ADELAIDE, SA (YPAD)

28 NOV 2024



NM TO NEXT WPT	AD010	3	2	1	AD030	4	3	2	0.9	RW05		
ALT (3° APCH PATH)	2730	2450	2140	1820	1500	1340	1020	700	360			



NOTES

CATEGORY	A	B	C	D
RNP (0.3)		360 (346-1.9)		
CIRCLING	NOT AUTHORISED			
ALTERNATE	(1380-4.4)		(1480-6.0)	(1480-7.0)

1. MAX IAS:
SADMI : 185KT.
2. COLOUR: SEE SPEC NOTICES.

Changes: WAYPOINT NAMES, Editorial.

PADGN17-181