

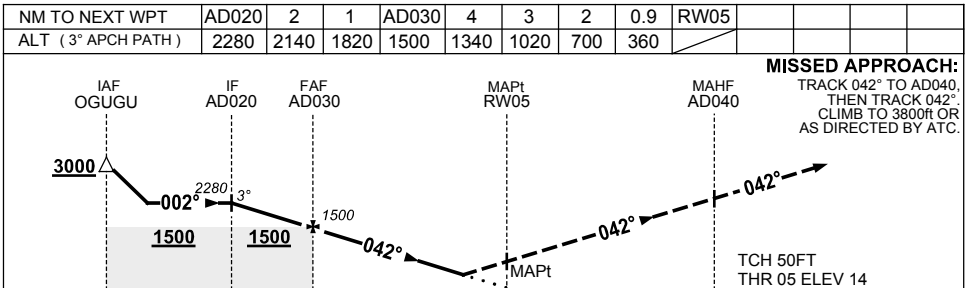
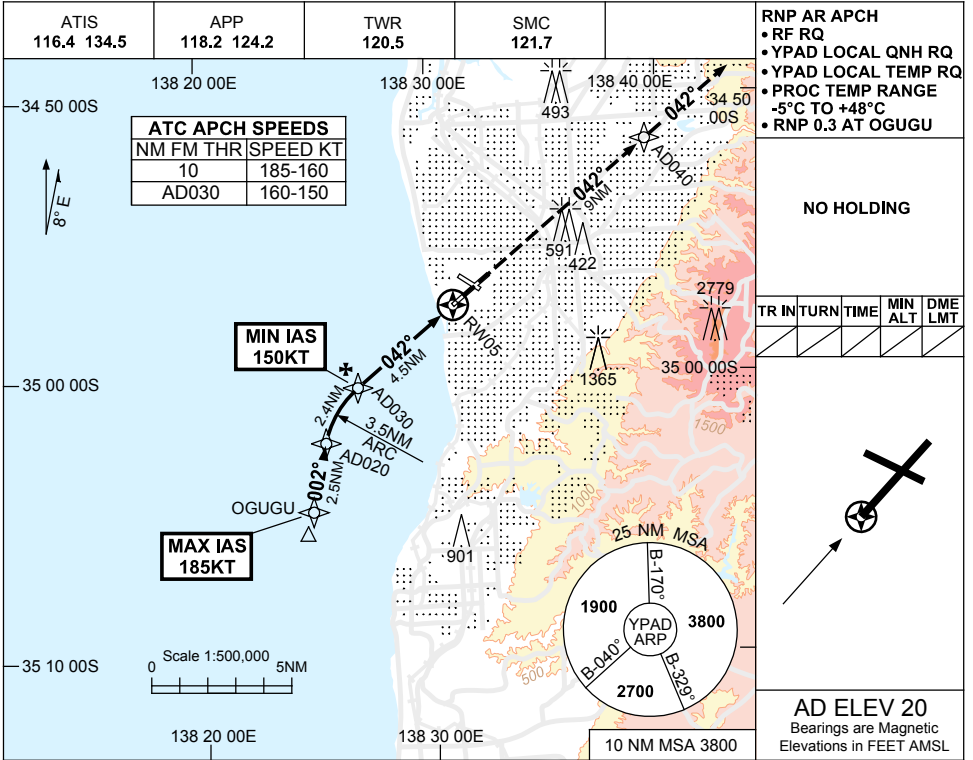
FOR CASA APPROVED OPERATORS ONLY

USE QNH

RNP X RWY 05 (AR)

ADELAIDE, SA (YPAD)

28 NOV 2024



CATEGORY	A	B	C	D
RNP (0.3)	360 (346-1.9)			
CIRCLING	NOT AUTHORISED			
ALTERNATE	(1380-4.4)	(1480-6.0)	(1480-7.0)	

- NOTES**
- MAX IAS:
OGUGU : 185KT.
 - COLOUR: SEE SPEC NOTICES.

Changes: WAYPOINT NAMES, Editorial.

PADGN11-181