

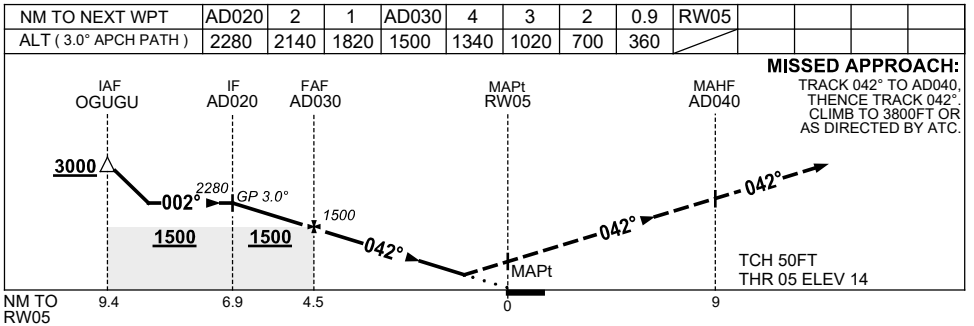
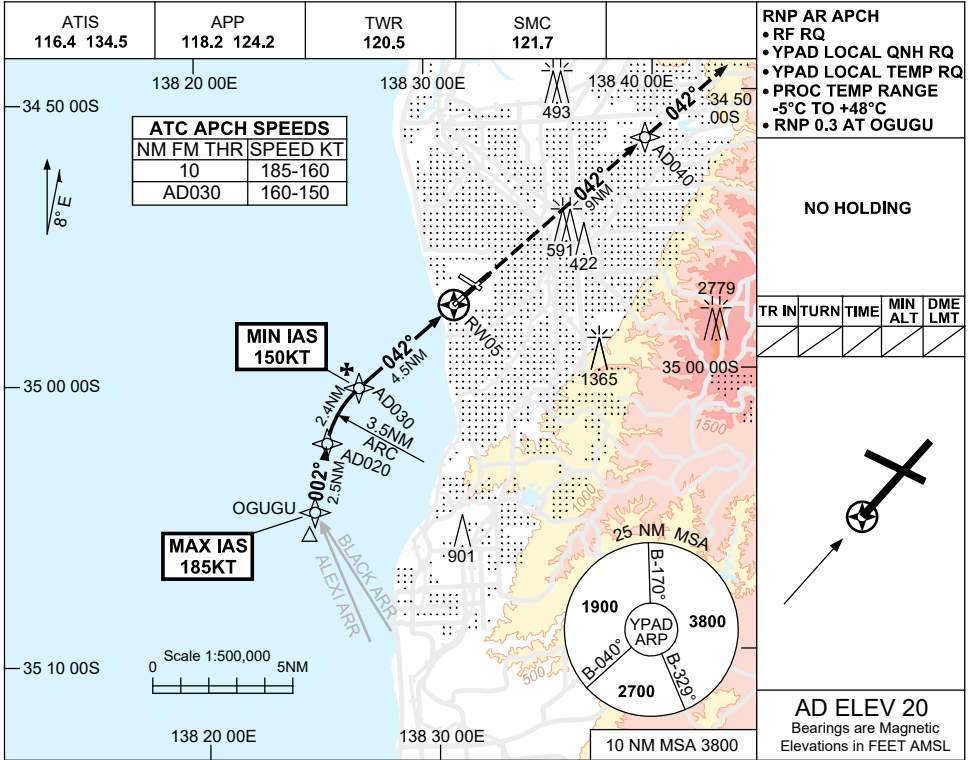
FOR CASA APPROVED OPERATORS ONLY

USE QNH

RNP X RWY 05 (AR)

ADELAIDE, SA (YPAD)

1 DEC 2022



CATEGORY	A	B	C	D
RNP (0.3)		360 (346-1.9)		
CIRCLING	NOT AUTHORISED			
ALTERNATE	(1380-4.4)		(1480-6.0)	(1480-7.0)

- NOTES**
- MAX IAS:
OGUGU : 185KT.
 - COLOUR: SEE SPEC NOTICES.

Changes: CHART TITLE, PBN SPECIFICATION BOX.

PADGN11-173