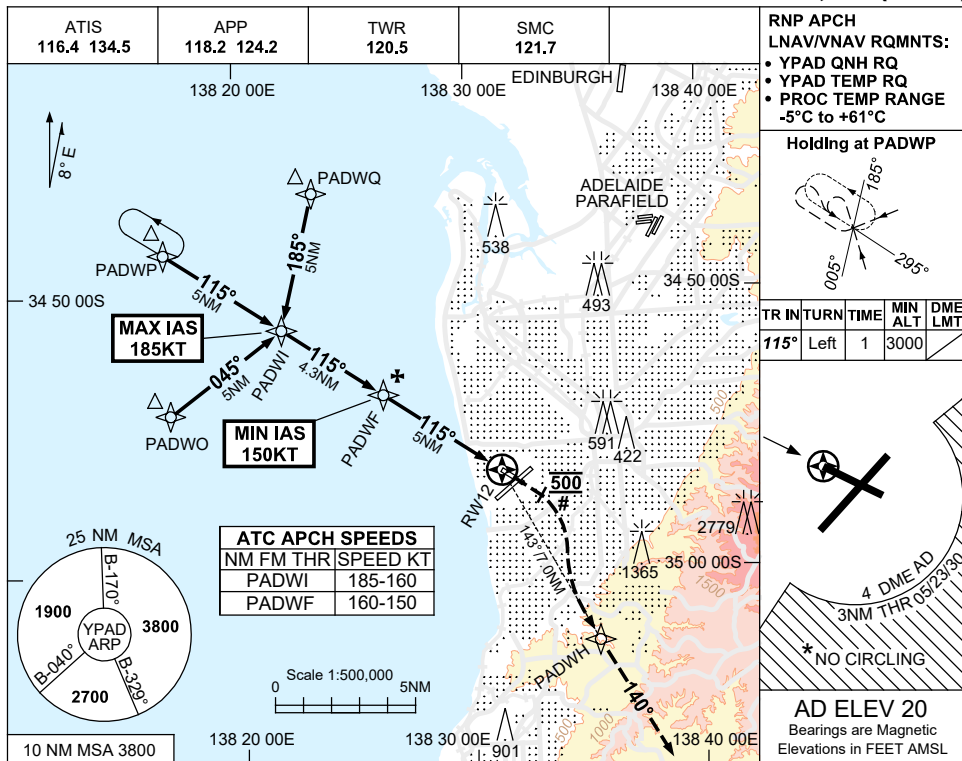


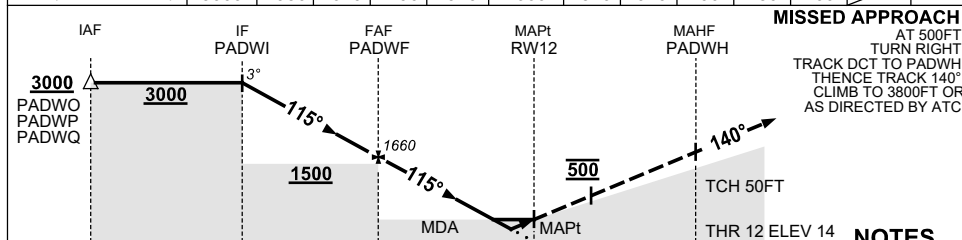
USE QNH

RNP RWY 12
ADELAIDE, SA (YPAD)

1 DEC 2022



NM TO NEXT WPT	PADWI	4	3	2	1	PADWF	4	3	2	1.2	1.1	RW12
ALT (3° APCH PATH)	3000	2930	2610	2290	1970	1660	1340	1020	700	450	400	



- MAX IAS:
INITIAL : 210KT.
PADWI : 185KT.
MAP TURN: 190KT.
- NO CIRCLING S OF RWY 05/23 BEYOND 4 DME AD OR BEYOND 3NM FM THR 05/23/30.
- COLOR: SEE SPEC NOTICES.
- HOLDING MAY NOT BE CONTAINED WITHIN CTA BLW 5000FT.

CATEGORY	A	B	C	D
LNAV/VNAV		400 (386-2.2)		450 (436-2.5)
LNAV		450 (430-2.4)		460 (440-2.5)
CIRCLING *	900 (880-2.4)		1000 (980-4.0)	1000 (980-5.0)
ALTERNATE	(1380-4.4)		(1480-6.0)	(1480-7.0)

Changes: CHART TITLE, PBN SPECIFICATION BOX.

PADGN03-173