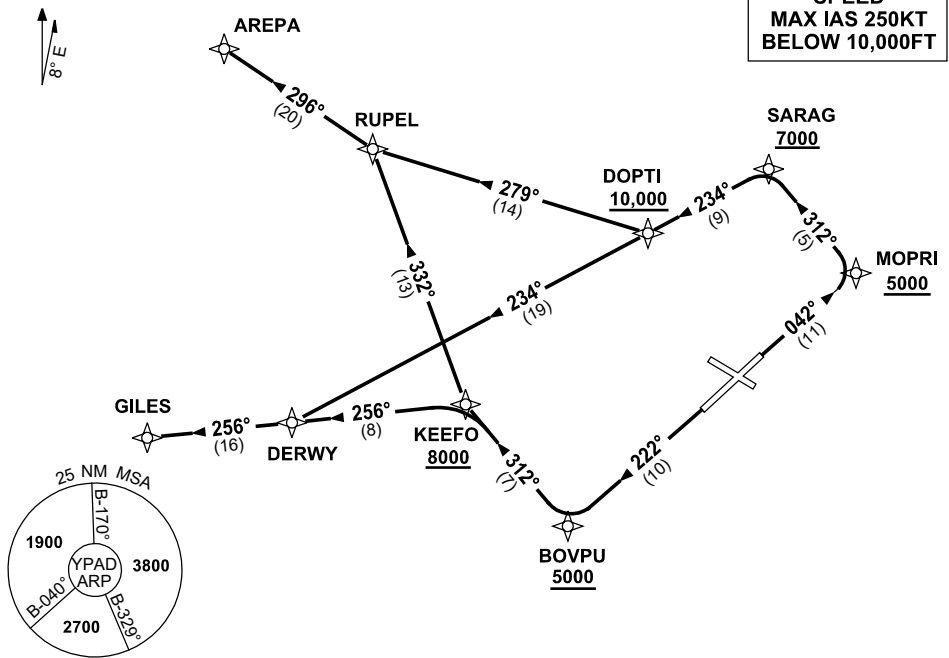


STANDARD INSTRUMENT DEPARTURES (SID)  
RWYS WEST (JET) (RNAV)  
ADELAIDE, SA (YPAD)

13 JUN 2024

ATIS 116.4 134.5	ACD 126.1	SMC 121.7	TWR 120.5	APP 124.2	Bearings are Magnetic Elevations in FEET AMSL
---------------------	--------------	--------------	--------------	--------------	--

NOT TO SCALE



10 NM MSA 3800

**AREPA ONE DEPARTURE**  
**GILES FIVE DEPARTURE**

**RWY 05**

- GRAD 4.4% to 900ft then 3.3%
- Track 042° to MOPRI  
**Cross** MOPRI AT or ABV 5000ft
- Turn LEFT track 312° to SARAG  
**Cross** SARAG AT or ABV 7000ft
- Turn LEFT track 234° to DOPTI  
**Cross** DOPTI AT or ABV 10,000ft

For AREPA

- Turn RIGHT track 279° to RUPEL
- Turn RIGHT track 296° to AREPA, then as cleared

For GILES

- Track 234° to DERWY
- Turn RIGHT track 256° to GILES, then as cleared

**RWY 23**

- GRAD 4.7% to 3300ft then 3.3%
- Track 222° to BOVPU  
**Cross** BOVPU AT or ABV 5000ft
- Turn RIGHT track 312° to KEEFO  
**Cross** KEEFO AT or ABV 8000ft

For AREPA

- Turn RIGHT track 332° to RUPEL
- Turn LEFT track 296° to AREPA, then as cleared

For GILES

- Turn LEFT track 256° to DERWY
- Track 256° to GILES, then as cleared

Changes: AREPA, RUPEL, DOPTI, SARAG, BOVPU REPLACE HAWKY, BIGAL, PARKA, SALIS, CORNS, VALIDITY NUMBER.

PADDP04-179