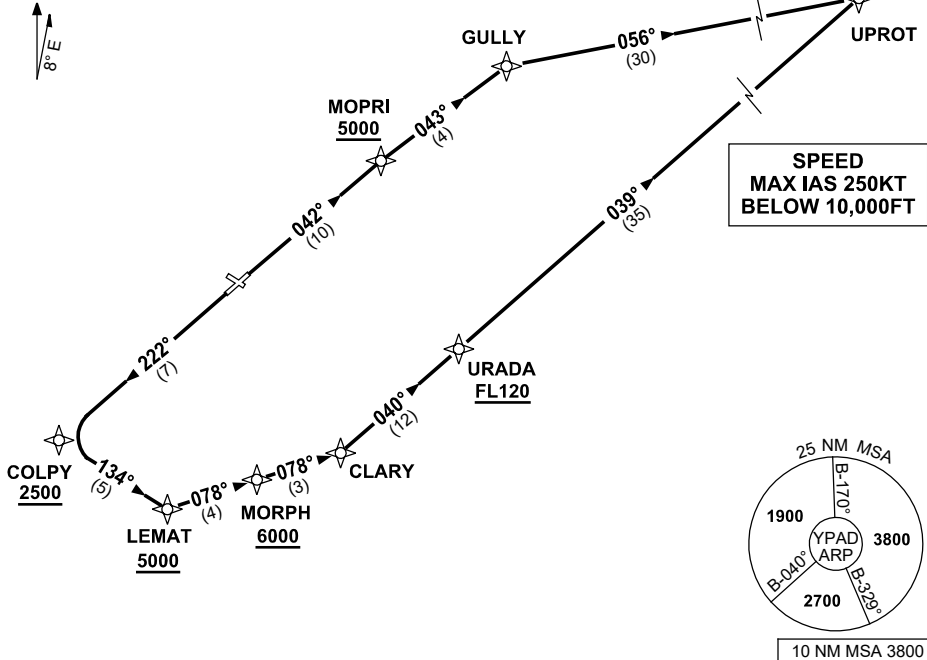


STANDARD INSTRUMENT DEPARTURES (SID)  
UPROT ONE (JET) (RNAV)  
ADELAIDE, SA (YPAD)

13 JUN 2024

|                     |              |              |              |              |  |  |
|---------------------|--------------|--------------|--------------|--------------|--|--|
| ATIS<br>116.4 134.5 | ACD<br>126.1 | SMC<br>121.7 | TWR<br>120.5 | APP<br>118.2 |  | Bearings are Magnetic<br>Elevations in FEET AMSL |
|---------------------|--------------|--------------|--------------|--------------|--|--|

NOT TO SCALE



**UPROT ONE DEPARTURE**

**RWY 05**

- GRAD 4.4% to 900ft then 3.3%
- Track 042° to MOPRI  
    Cross MOPRI AT or ABV 5000ft
- Track 043° to GULLY
- Turn RIGHT track 056° to UPROT,  
    then as cleared

**RWY 23**

- GRAD 4.7% to 3300ft then 3.3%
- Track 222° to COLPY  
    Cross COLPY AT or ABV 2500ft
- Turn LEFT track 134° to LEMAT  
    Cross LEMAT AT or ABV 5000ft
- Turn LEFT track 078° to MORPH  
    Cross MORPH AT or ABV 6000ft
- Track 078° to CLARY,
- Turn LEFT track 040° to URADA,  
    Cross URADA AT or ABV FL120
- Track 039° to UPROT,  
    then as cleared

Changes: UPROT REPLACES SEDAN, LEMAT REPLACES SULLY, VALIDITY NUMBER, Editorial.

PADDP03-179