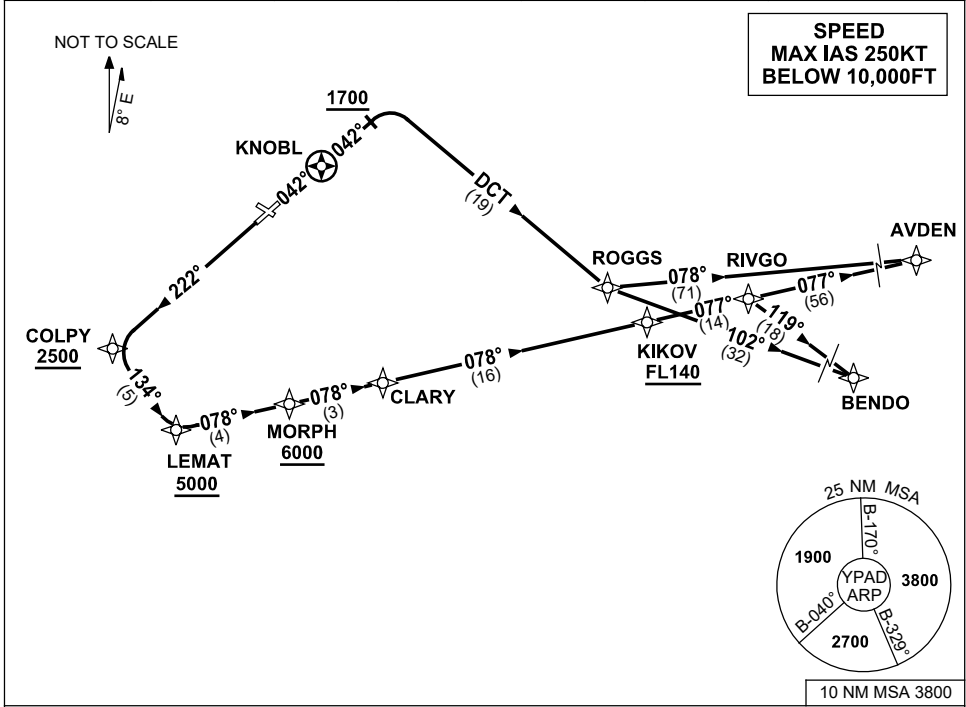


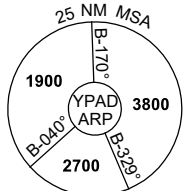
**STANDARD INSTRUMENT DEPARTURES (SID)  
RWYS EAST (JET) (RNAV)  
ADELAIDE, SA (YPAD)**

**13 JUN 2024**

ATIS 116.4 134.5	ACD 126.1	SMC 121.7	TWR 120.5	APP 118.2	Bearings are Magnetic Elevations in FEET AMSL
---------------------	--------------	--------------	--------------	--------------	--



**SPEED  
MAX IAS 250KT  
BELOW 10,000FT**



10 NM MSA 3800

**AVDEN ONE DEPARTURE  
BENDO THREE DEPARTURE**

**RWY 05**

- GRAD 5.7% to 3300ft then 3.3%
- Track 042°
- After passing KNOBL **AND** 1700ft turn RIGHT
- Track DCT to ROGGS

**For AVDEN**

- From ROGGS turn LEFT track 078° to AVDEN, then as cleared

**For BENDO**

- From ROGGS turn as required, track 102° to BENDO, then as cleared

**RWY 23**

- GRAD 4.7% to 3300ft then 3.3%
- Track 222° to COLPY
- Turn LEFT, track 134° to LEMAT
- **Cross** COLPY AT or ABV 2500ft
- **Cross** LEMAT AT or ABV 5000ft
- Turn LEFT, track 078° to MORPH
- **Cross** MORPH AT or ABV 6000ft
- Track 078° to CLARY
- Track 078° to KIKOV
- **Cross** KIKOV AT or ABV FL140
- Track 077° to RIVGO

**For AVDEN**

- From RIVGO track 077° to AVDEN, then as cleared

**For BENDO**

- From RIVGO turn RIGHT track 119° to BENDO, then as cleared

Changes: AVDEN, RIVGO, KIKOV, LEMAT REPLACE PANKI, MURRY, BARKA, SULLY, VALIDITY NUMBER. PADDP02-179