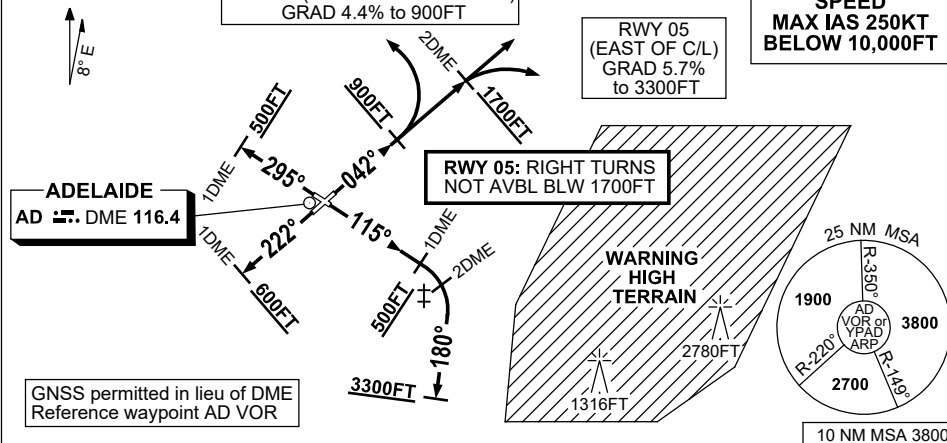


## 17 JUN 2021

NOT TO SCALE

RWY 05  
(EAST OF C/L)  
GRAD 5.7%  
to 3300FT

**SPEED  
MAX IAS 250KT  
BELOW 10,000FT**



**NOTE:** 1. FOR RWY 05 DEPS, ACFT WITH FLT PLAN TRACKS IN THE SECTOR 042° THROUGH WEST TO 219° CAN EXPECT A LEFT TURN.

2. JETS DEPARTING FROM RWY 23/30 FOR TRACKS TO THE EAST OF ADELAIDE CAN EXPECT TO BE AT OR ABV 5000FT BY CROSSING R-185°AD or THE COAST EASTBOUND
3. WHEN AD DME NOT AVBL, ON PILOT REQ APP WILL ADVISE PASSING DME DIST BASED ON RADAR OBS.

- GRAD 5.7% to 3300FT thence 3.3%
- Track 042°
- AT or ABV 1700FT **AND** after passing 2 AD DME turn to assigned heading

RIGHT TURNS BLW 1700FT NOT AVBL

- GRAD 4.4% to 900FT thence 3.3%
- Track 042°
- AT or ABV 900FT turn LEFT to assigned heading or track

- GRAD 4.7% to 1500FT thence 3.3%
- Track 115°
- $\nabla$  AT or ABV 500FT **AND** between 1 AD DME and 2 AD DME turn RIGHT track 180°
- AT or ABV 3300FT turn to assigned heading

- GRAD 4.7% to 3300FT thence 3.3%
- Track 222°
- AT or ABV 600FT **AND** after passing 1 AD DME SW turn to assigned heading or track

- GRAD 4.7% to 3300FT thence 3.3%
- Track 295°
- AT or ABV 500FT **AND** after passing 1 AD DME NW turn to assigned heading or track

### On recognition of communication failure

- Squawk 7600
- Maintain last assigned vector for two minutes, and
- CLIMB IF NECESSARY TO MINIMUM SAFE ALTITUDE, to maintain terrain clearance, then
- proceed in accordance with the latest ATC route clearance acknowledged.