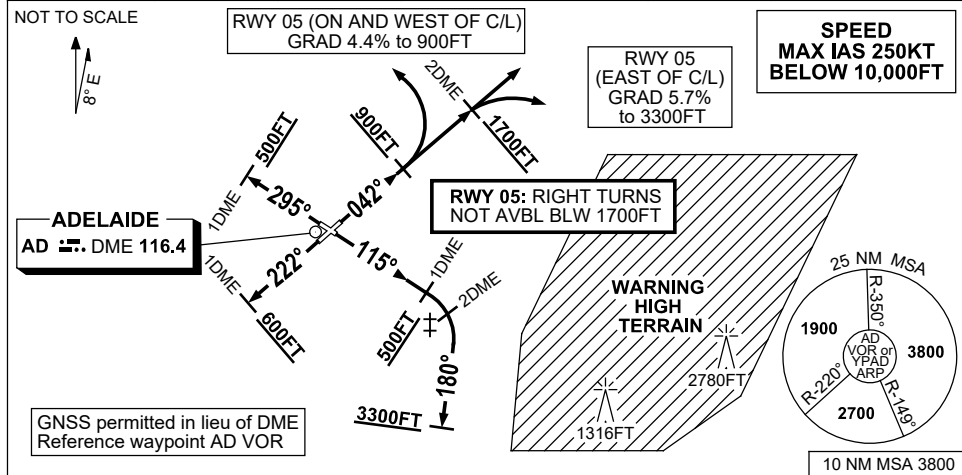


**STANDARD INSTRUMENT DEPARTURES (SID)  
ADELAIDE FOUR DEPARTURE (RADAR)  
ADELAIDE, SA (YPAD)**

17 JUN 2021

ATIS 116.4 134.5	ACD 126.1	SMC 121.7	TWR 120.5	APP (SE) 118.2	APP (NW) 124.2	Bearings are Magnetic Elevations in FEET AMSL
---------------------	--------------	--------------	--------------	-------------------	-------------------	--



**ADELAIDE FOUR DEPARTURE (RADAR)**

- NOTE:**
- FOR RWY 05 DEPS, ACFT WITH FLT PLAN TRACKS IN THE SECTOR 042° THROUGH WEST TO 219° CAN EXPECT A LEFT TURN.
  - JETS DEPARTING FROM RWY 23/30 FOR TRACKS TO THE EAST OF ADELAIDE CAN EXPECT TO BE AT OR ABV 5000FT BY CROSSING R-185°AD or THE COAST EASTBOUND
  - WHEN AD DME NOT AVBL, ON PILOT REQ APP WILL ADVISE PASSING DME DIST BASED ON RADAR OBS.

**RWY 05 (DEPS EAST OF RWY C/L)**

- GRAD 5.7% to 3300FT thence 3.3%
- Track 042°
- AT or ABV 1700FT **AND** after passing 2 AD DME turn to assigned heading  
RIGHT TURNS BLW 1700FT NOT AVBL

**RWY 05 (DEPS ON & WEST OF RWY C/L)**

- GRAD 4.4% to 900FT thence 3.3%
- Track 042°
- AT or ABV 900FT turn LEFT to assigned heading or track

**RWY 12 (MAX IAS 175KT until tracking 180°) ‡**

- GRAD 4.7% to 1500FT thence 3.3%
- Track 115°
- ‡AT or ABV 500FT **AND** between 1 AD DME and 2 AD DME turn RIGHT track 180°
- AT or ABV 3300FT turn to assigned heading

**RWY 23**

- GRAD 4.7% to 3300FT thence 3.3%
- Track 222°
- AT or ABV 600FT **AND** after passing 1 AD DME SW turn to assigned heading or track

**RWY 30**

- GRAD 4.7% to 3300FT thence 3.3%
- Track 295°
- AT or ABV 500FT **AND** after passing 1 AD DME NW turn to assigned heading or track

**COMMUNICATIONS FAILURE: PROCEDURE IN IMC  
IF ABLE CTC AD APP 03-9235-2012**

On recognition of communication failure

- Squawk 7600
- Maintain last assigned vector for two minutes, and
- CLIMB IF NECESSARY TO MINIMUM SAFE ALTITUDE, to maintain terrain clearance, then
- proceed in accordance with the latest ATC route clearance acknowledged.

Changes: Editorial.

PADDP01-167