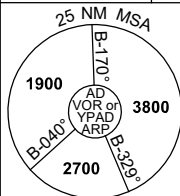


# DME or GNSS ARRIVAL PROCEDURES ADELAIDE, SA (YPAD)

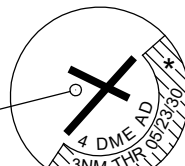
25 MAR 2021

ATIS 116.4 134.5	APP 118.2 124.2	TWR 120.5	SMC 121.7		Bearings are Magnetic Elevations in FEET AMSL
---------------------	--------------------	--------------	--------------	--	--



**DME USING AD DME  
REFERENCE WAYPOINT AD VOR**

**AD** **VOR/DME 116.4**



\* NO CIRCLING SOUTH  
OF RWY 05/23 BEYOND  
4 DME OR BEYOND 3NM  
FM THR 05/23/30

**AD ELEV 20**

10 NM MSA 3800

### SECTOR A

**MISSED APPROACH:**  
TURN AS REQUIRED,  
INTERCEPT AND  
TRACK R-044°. CLIMB TO 3800FT  
OR AS DIRECTED BY  
ATC.

**LIMITATION:**  
200KT IAS MAX  
UNTIL ESTABLISHED  
ON R-044°

NM TO AD VOR	25	15	10	5	0															
<b>CIRCLING MINIMA</b>	A,B: 900-2.4			C: 1000-4.0		D: 1000-5.0														
NM TO AD VOR	8.1	8	7	6	5	4	3	2.4												
ALT (3° APCH PATH)	2700	2680	2360	2050	1730	1410	1090	900												

### SECTOR B

**MISSED APPROACH:**  
TURN LEFT,  
INTERCEPT AND  
TRACK R-224°, CLIMB TO 1800FT;  
OR AS DIRECTED BY  
ATC.

NM TO AD VOR	25	15	10	7	5	3	0														
<b>CIRCLING MINIMA</b>	A,B: 900-2.4			C: 1000-4.0		D: 1000-5.0															
NM TO AD VOR	9.4	9	8	7	6	5	4	3	2	1	0.3										
ALT (3° APCH PATH)	3800	3680	3360	3040	2720	2410	2090	1770	1450	1130	910										

### SECTOR C

**MISSED APPROACH:**  
TURN LEFT,  
INTERCEPT AND  
TRACK R-300°, CLIMB TO 1800FT;  
OR AS DIRECTED BY  
ATC.

NM TO AD VOR	25	15	8	6	5	4	2	0													
<b>CIRCLING MINIMA</b>	A,B: 900-2.4			C: 1000-4.0		D: 1000-5.0															
NM TO AD VOR	10	9	8	7	6	5	4	3	2	0.9											
ALT (3° APCH PATH)	3800	3480	3160	2840	2520	2210	1890	1570	1250	900											

Changes: Editorial

PADDG01-166