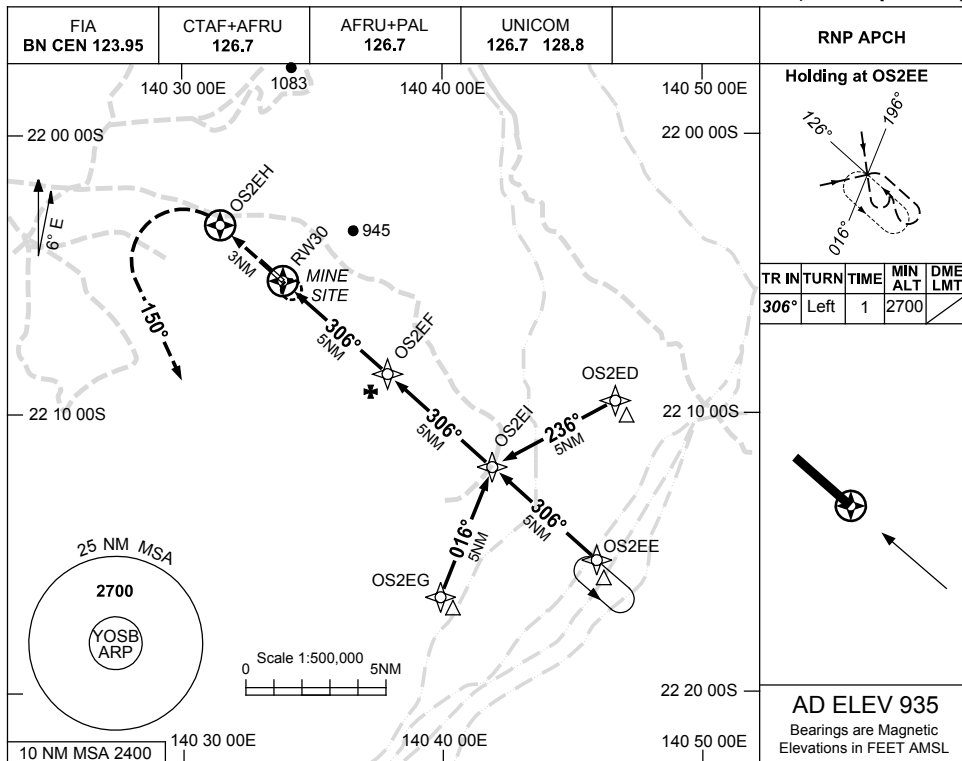


USE QNH

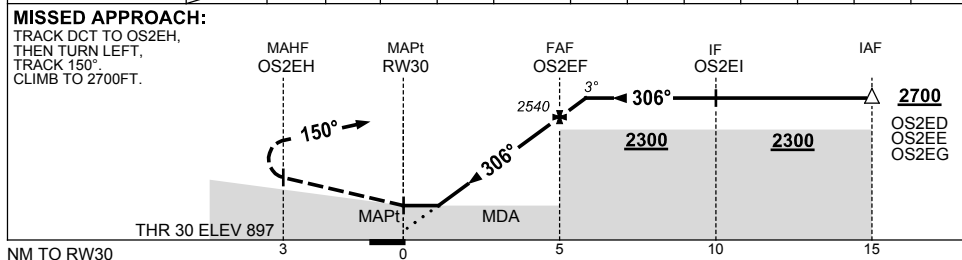
RNP RWY 30

**OSBORNE MINE, QLD (YOSB)**

15 JUN 2023



NM TO NEXT WPT	RW30	1.6	2	3	4	OS2EF	0.5						
ALT (3° APCH PATH)		1470	1580	1900	2220	2540	2700						



**NOTES**

1. MAX IAS:  
 INITIAL : 210KT.

CATEGORY	A	B	C	D
LNAV	1470 (573-3.3)			NOT APPLICABLE
CIRCLING	1530 (595-2.4)	1680 (745-4.0)		
ALTERNATE	(1095-4.4)		(1245-6.0)	

Changes: MINIMA, MAG VAR, WPT NAMING CONVENTION.

OSBGN02-175