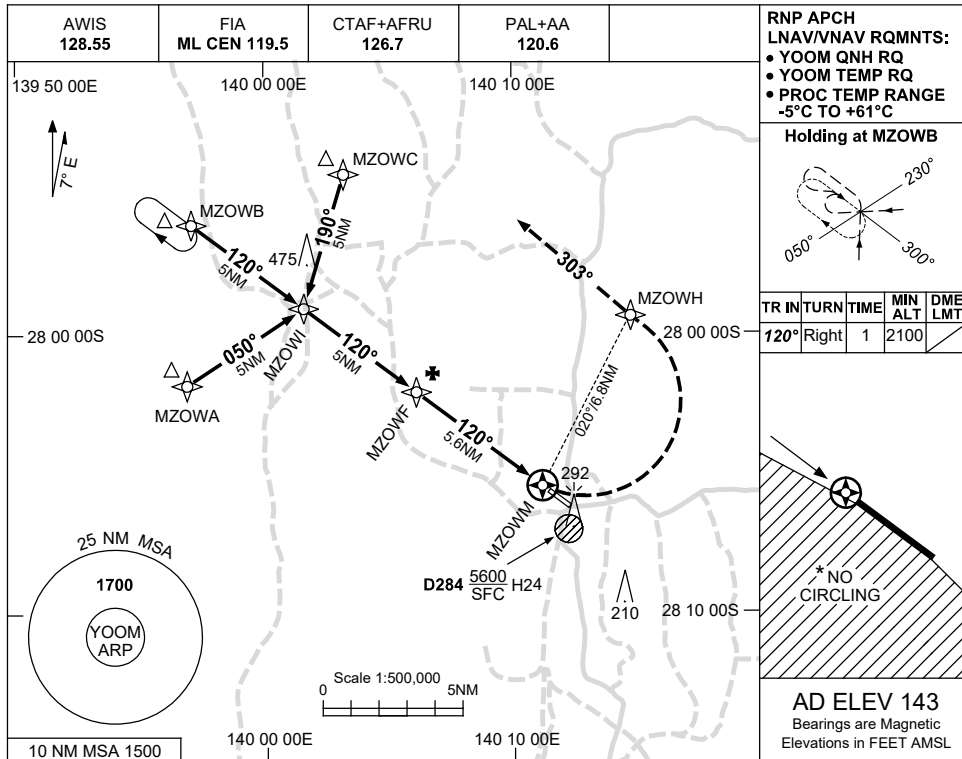


USE QNH

RNP RWY 12
MOOMBA, SA (YOOM)

30 NOV 2023

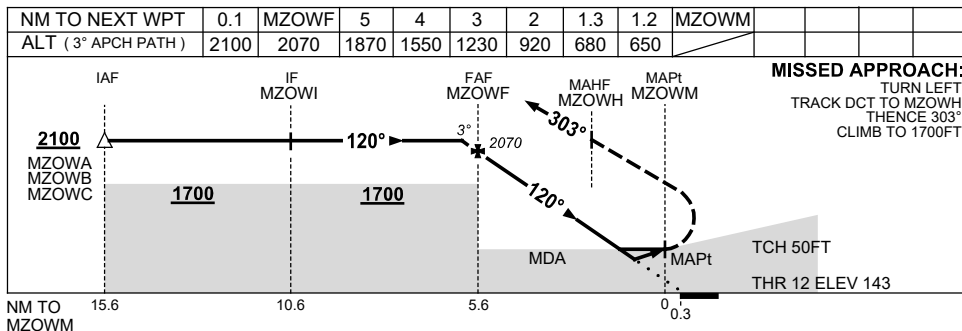


RNP APCH
LNAV/VNAV RQMTS:
• YOOM QNH RQ
• YOOM TEMP RQ
• PROC TEMP RANGE
-5°C TO +61°C

Holding at MZOWB

| TR | IN | TURN | TIME | MIN ALT | DME LMT |
|------|-------|------|------|---------|---------|
| 120° | Right | | 1 | 2100 | |

AD ELEV 143
Bearings are Magnetic
Elevations in FEET AMSL



NOTES

| CATEGORY | A | B | C | D |
|------------|---------------|---------------|---------------|----------------|
| LNAV/VNAV | | 650 (507-2.9) | | NOT APPLICABLE |
| LNAV | | 680 (537-3.0) | | |
| CIRCLING * | 740 (597-2.4) | | 840 (697-4.0) | |
| ALTERNATE | (1097-4.4) | | (1197-6.0) | |

- MAX IAS: ; 210KT.
INITIAL MAP TURN: 190KT.
- * NO CIRCLING S OF RWY 12/30.

Changes: UNICOM REMOVAL, Editorial.

OOMGN01-177