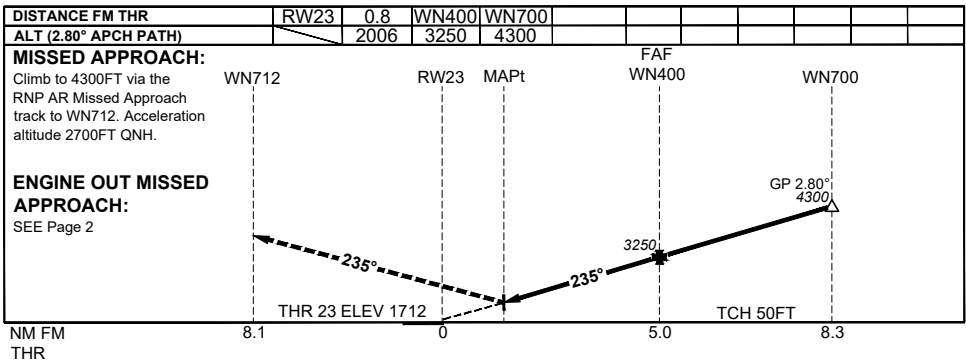
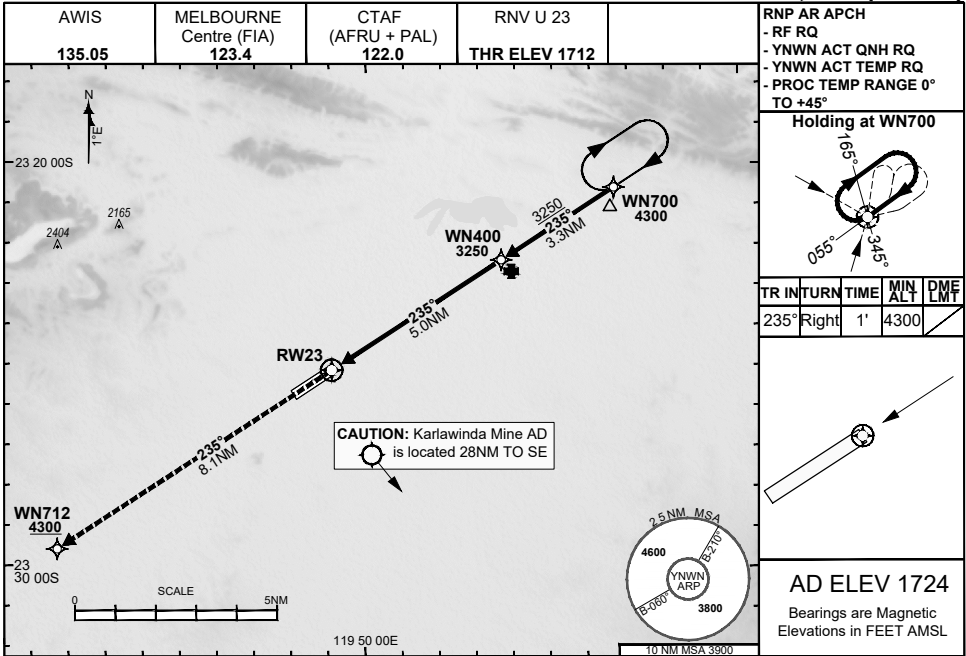


**FOR CASA APPROVED  
OPERATORS ONLY**

**30 NOV 2023**

**USE QNH**

**NEWMAN, WA (YNWN)**



**NOTES**

- 1) Lateral transition to MAP must not be initiated prior to DA(H) PNH.
- 2) PAPI and glidepath not coincident.
- 3) Minimum MAP gradient (All Engines) 4.6% to 4300FT.

CATEGORY	A	B	C	D
RNP (0.30)	NOT APPLICABLE		DA(H) 2006' (294)-1.6	
CIRCLING	NOT AUTHORISED			

202308101024COPYRIGHT 2023 NAVERUS, INC. USA, GE PROPRIETARY INFORMATION  
 Changes: EDITORIAL, KARLAWINDA ADD MINE, RNAV (RNP) TO RNP AR, RNP AR NOTES, NOTE 4) REMOVED NWNGN13-177

**DO NOT USE FOR NAVIGATION**  
Prepared by GE Aviation

