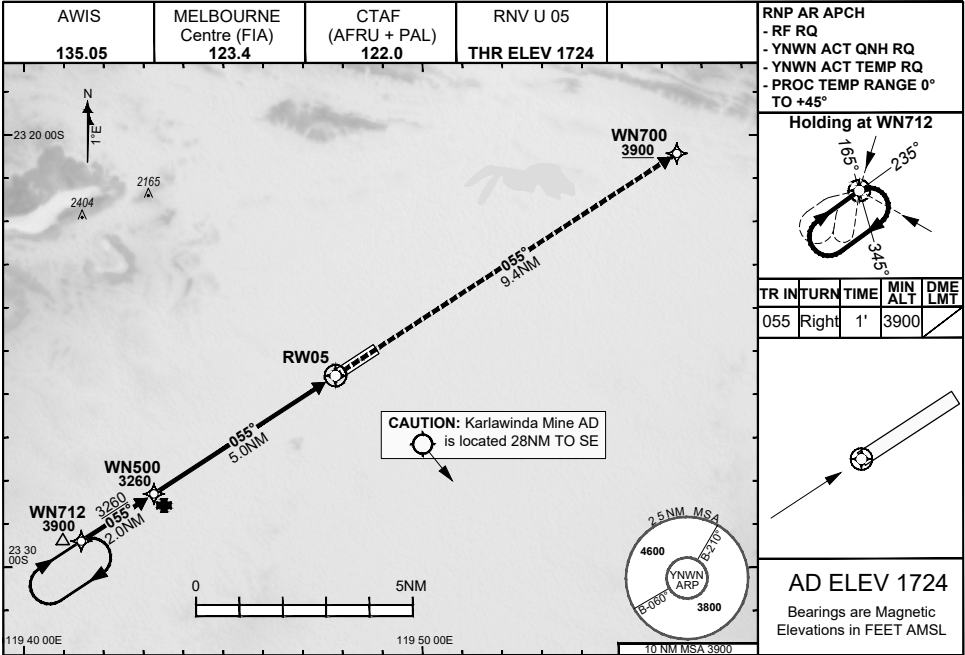


FOR CASA APPROVED OPERATORS ONLY

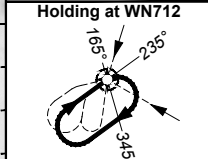
30 NOV 2023

USE QNH

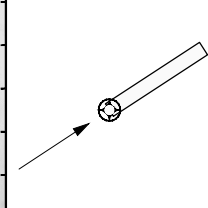
NEWMAN, WA (YNNW)



RNP AR APCH
 - RF RQ
 - YNNW ACT QNH RQ
 - YNNW ACT TEMP RQ
 - PROC TEMP RANGE 0° TO +45°

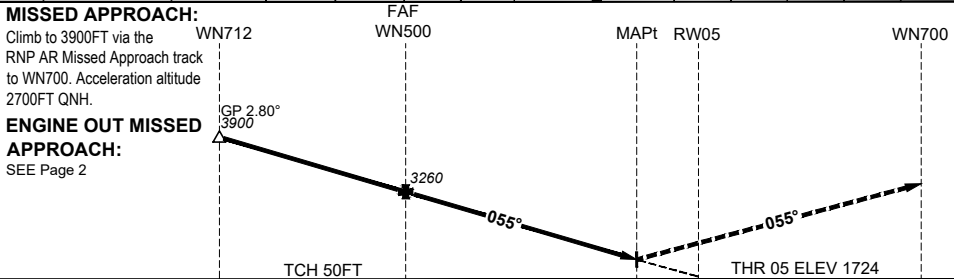


TR	INTURN	TIME	MIN ALT	DME LMT
055	Right	1'	3900	



AD ELEV 1724
 Bearings are Magnetic Elevations in FEET AMSL

DISTANCE FM THR	WN712	WN500	0.9	0.8	RW05				
ALT (2.80° APCH PATH)	3900	3260	2030	2024					



NM FM THR	7.0	5.0	0	9.4
THR				

NOTES

CATEGORY	A	B	C	D
RNP (0.10)	NOT APPLICABLE		DA(H) 2024' (300)-1.6	
RNP (0.30)	NOT APPLICABLE		DA(H) 2030' (306)-1.6	
CIRCLING	NOT AUTHORISED			

- 1) Lateral transition to MAP must not be initiated prior to DA(H) PNL.
- 2) PAPI and glidepath not coincident.
- 3) Minimum MAP gradient (All Engines) 3.3% to 3900FT.

202308101023COPYRIGHT 2023 NAVERUS, INC. USA, GE PROPRIETARY INFORMATION

Changes: EDITORIAL, KARLAWINDA ADD MINE, RNAV (RNP) TO RNP AR, RNP AR NOTES, NOTE 4) REMOVED

NWNGN11-177

DO NOT USE FOR NAVIGATION

Prepared by GE Aviation

