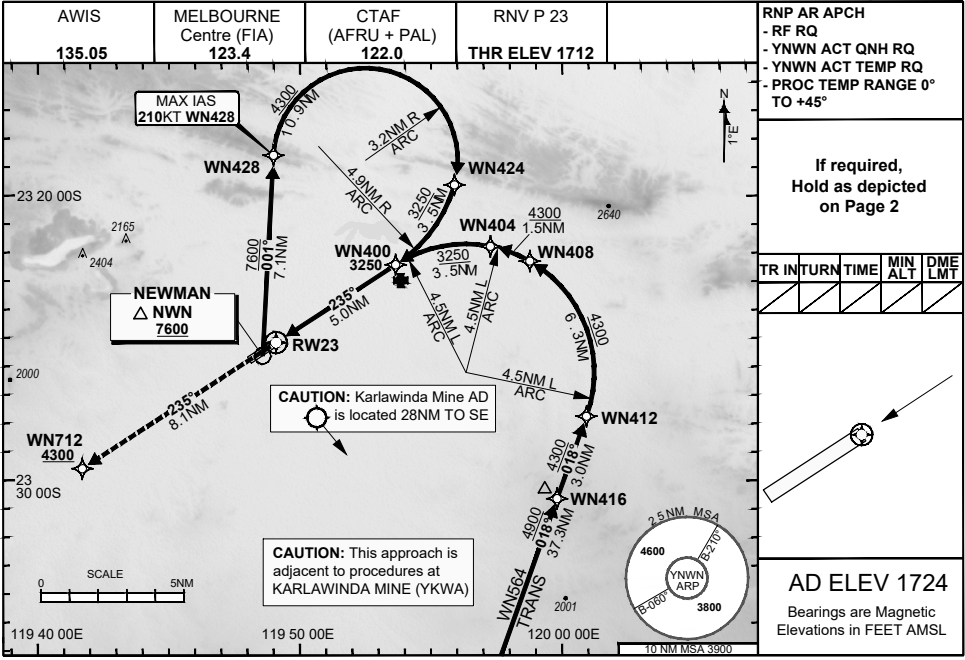


FOR CASA APPROVED OPERATORS ONLY

30 NOV 2023

USE QNH

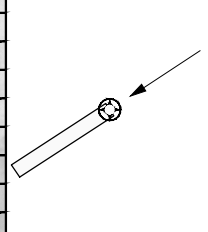
NEWMAN, WA (YNWN)



RNP AR APCH
 - RF RQ
 - YNWN ACT QNH RQ
 - YNWN ACT TEMP RQ
 - PROC TEMP RANGE 0° TO +45°

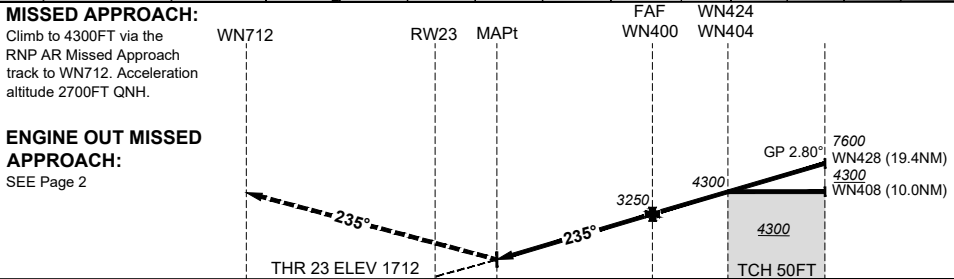
If required, Hold as depicted on Page 2

TR	INT	TURN	TIME	MIN ALT	DME LMT



AD ELEV 1724
 Bearings are Magnetic Elevations in FEET AMSL

DISTANCE FM THR	RW23	0.8	WN400	WN404	WN408	WN428
ALT (2.80° APCH PATH)	2006	3250	4300	4730	7600	



NM FM THR	8.1	0	5.0	8.5
THR				

NOTES

- 1) Lateral transition to MAP must not be initiated prior to DA(H) PSN.
- 2) PAPI and glidepath not coincident.
- 3) Minimum MAP gradient (All Engines) 4.6% to 4300FT.
- 4) CAUTION: This approach is adjacent to procedures at KARLAWINDA MINE (YKWA).

CATEGORY	A	B	C	D
RNP (0.30)	NOT APPLICABLE		DA(H) 2006' (294)-1.6	
CIRCLING	NOT AUTHORISED			

202308101021COPYRIGHT 2023 NAVERUS, INC. USA, GE PROPRIETARY INFORMATION

Changes: EDITORIAL, KARLAWINDA ADD MINE, RNAV (RNP) TO RNP AR, RNP AR NOTES, REMOVED B737 NOTE NWNGN09-177

DO NOT USE FOR NAVIGATION

Prepared by GE Aviation

