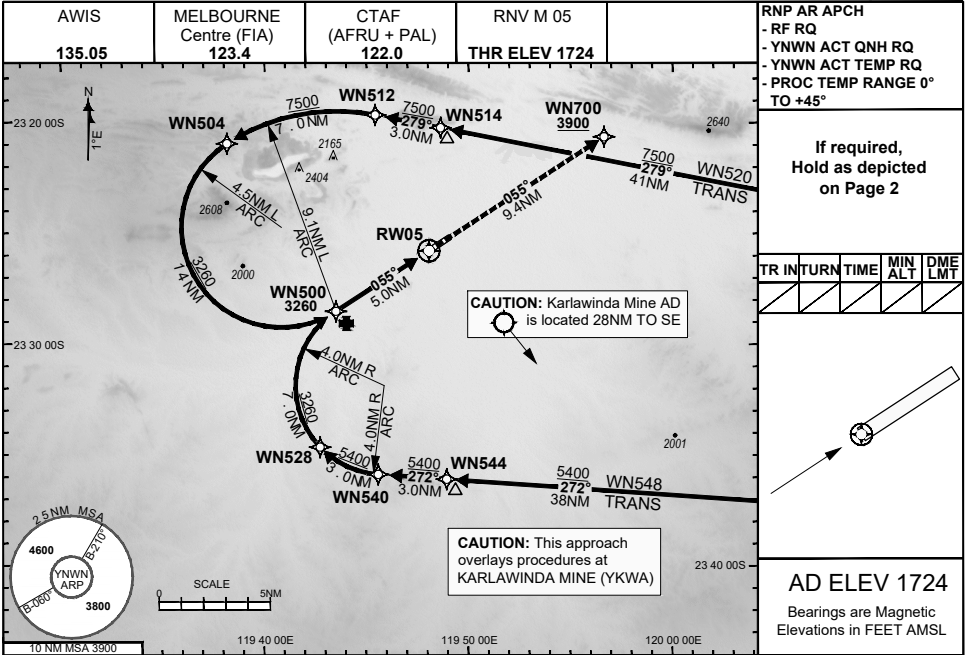


FOR CASA APPROVED OPERATORS ONLY

30 NOV 2023

USE QNH

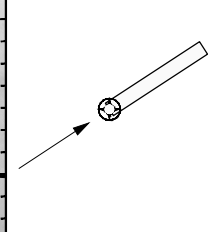
NEWMAN, WA (YNNW)



RNP AR APCH
 - RF RQ
 - YNNW ACT QNH RQ
 - YNNW ACT TEMP RQ
 - PROC TEMP RANGE 0° TO +45°

If required, Hold as depicted on Page 2

TR	INT	TURN	TIME	MIN ALT	DME LMT

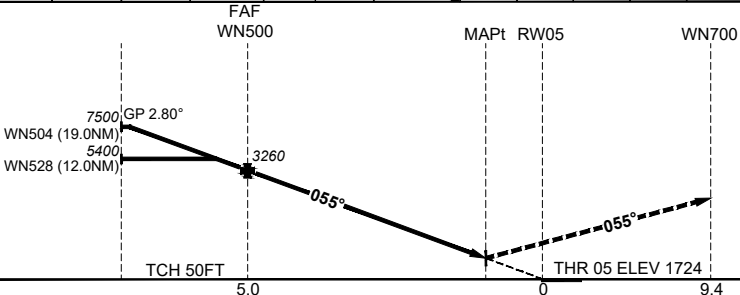


AD ELEV 1724
 Bearings are Magnetic Elevations in FEET AMSL

DISTANCE FM THR	WN504	WN528	WN500	0.9	0.8	RW05
ALT (2.80° APCH PATH)	7500	5400	3260	2030	2024	

MISSED APPROACH:
 Climb to 3900FT via the RNP AR Missed Approach track to WN700. Acceleration altitude 2700FT QNH.

ENGINE OUT MISSED APPROACH:
 SEE Page 2



NM FM THR	5.0	0	9.4
THR			

CATEGORY	A	B	C	D
RNP (0.10)	NOT APPLICABLE		DA(H) 2024' (300)-1.6	
RNP (0.30)	NOT APPLICABLE		DA(H) 2030' (306)-1.6	
CIRCLING	NOT AUTHORISED			

- NOTES**
- 1) Lateral transition to MAP must not be initiated prior to DA(H) PSN.
 - 2) PAPI and glidepath not coincident.
 - 3) Minimum MAP gradient (All Engines) 3.3% to 3900FT.
 - 4) CAUTION: This approach overlays procedures at KARLAWINDA MINE (YKWA).

202308101012COPYRIGHT 2023 NAVERUS, INC. USA, GE PROPRIETARY INFORMATION
 Changes: EDITORIAL, KARLAWINDA ADD MINE, RNAV (RNP) TO RNP AR, RNP AR NOTES, REMOVED B737 NOTE NWNGN03-177

DO NOT USE FOR NAVIGATION

Prepared by GE Aviation

