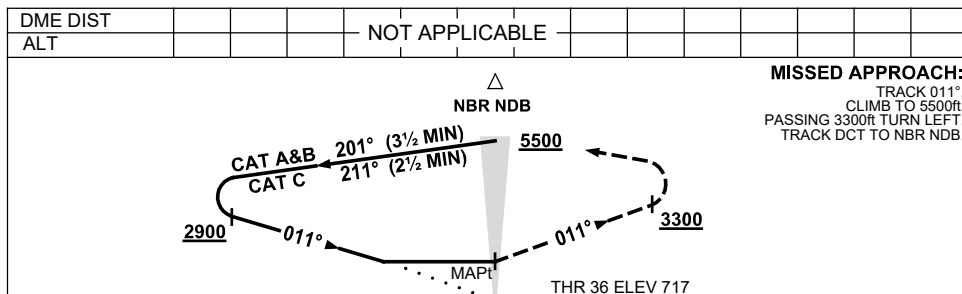
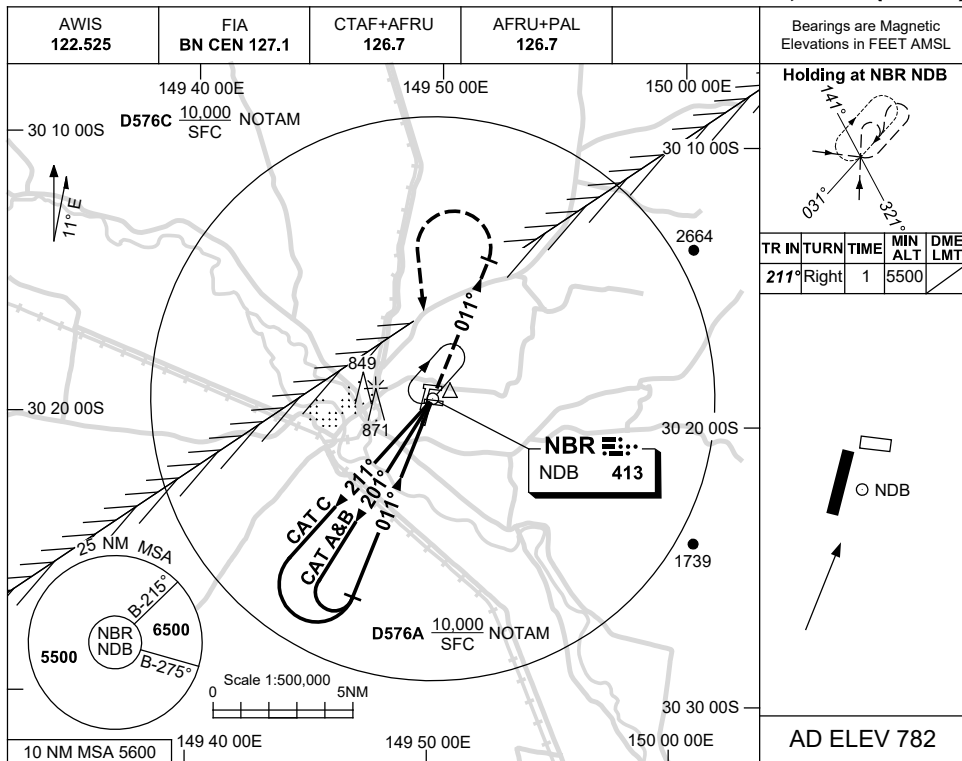


USE QNH

NDB RWY 36
NARRABRI, NSW (YNBR)

21 MAR 2024



NOTES

CATEGORY	A	B	C	D
S-I NDB	1630 (913-5.0)			NOT APPLICABLE
CIRCLING	1650 (868-2.4)	1680 (898-4.0)		
ALTERNATE	(1368-4.4)		(1398-6.0)	

- MAX IAS:
INITIAL :
CAT C : 210KT.

Changes: D576A & C ADDED, Editorial.

NBRNB01-178