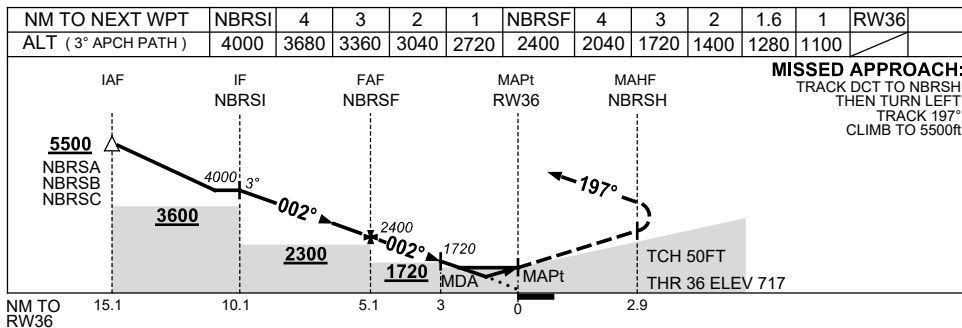
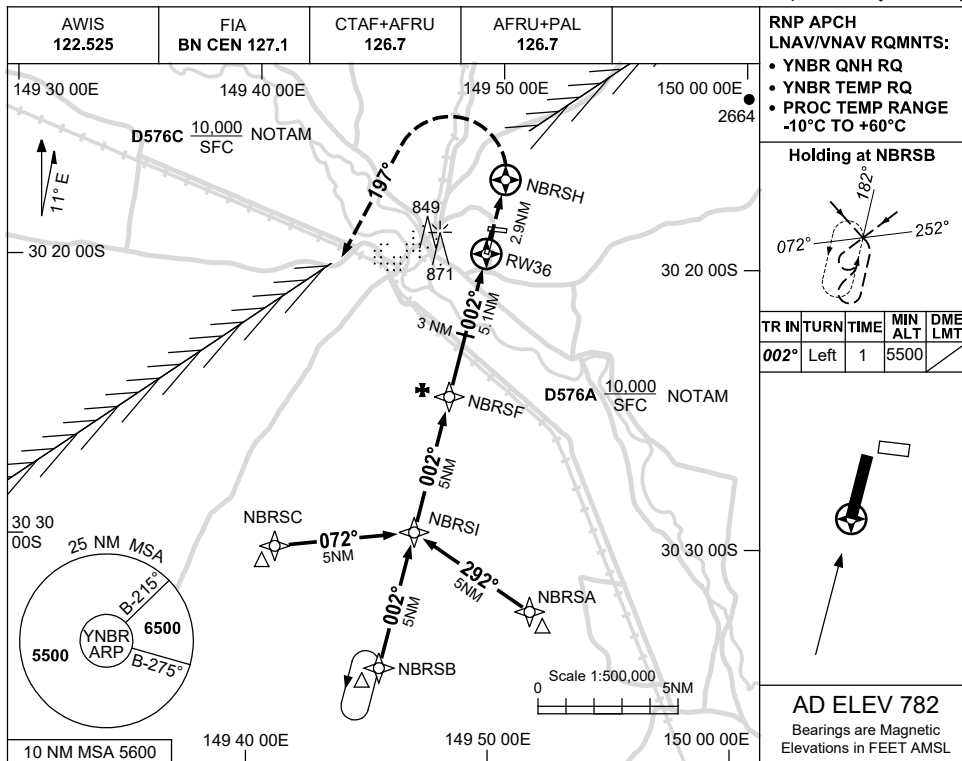


USE QNH

RNP RWY 36

21 MAR 2024

NARRABRI, NSW (YNBR)



NOTES

CATEGORY	A	B	C	D
LNAV/VNAV		1100 (383-2.1)		NOT APPLICABLE
LNAV		1280 (563-3.2)		
CIRCLING	1650 (868-2.4)		1680 (898-4.0)	
ALTERNATE	(1368-4.4)		(1398-6.0)	

1. MAX IAS:
 INITIAL : 210KT.

Changes: D576A & C ADDED, Editorial.

NBRGN01-178