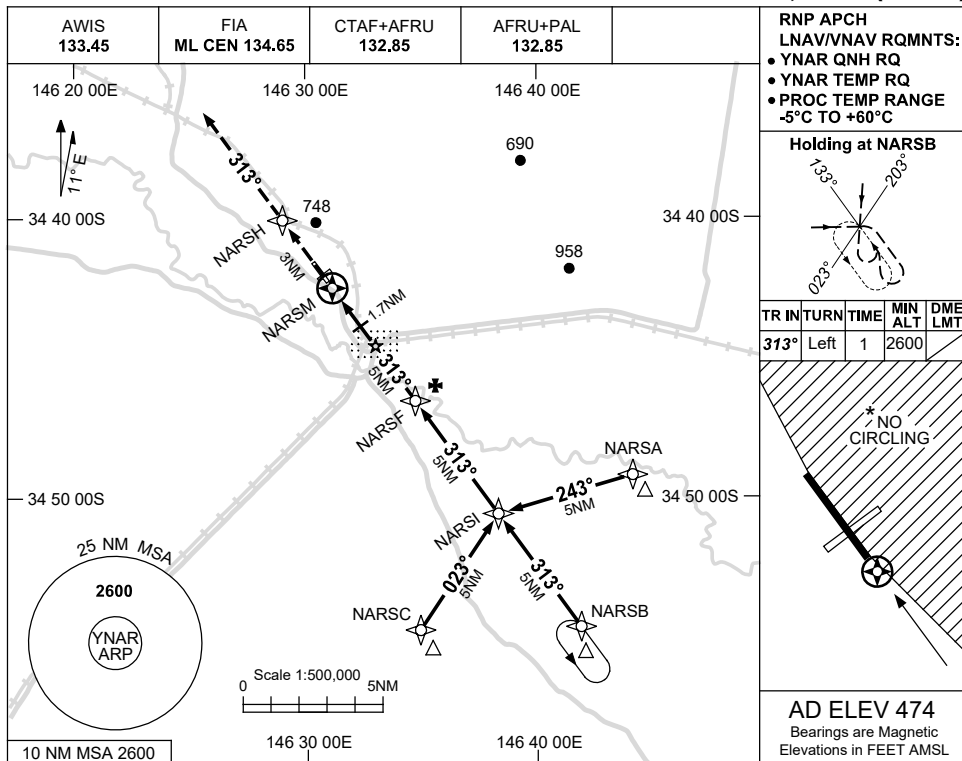


USE QNH

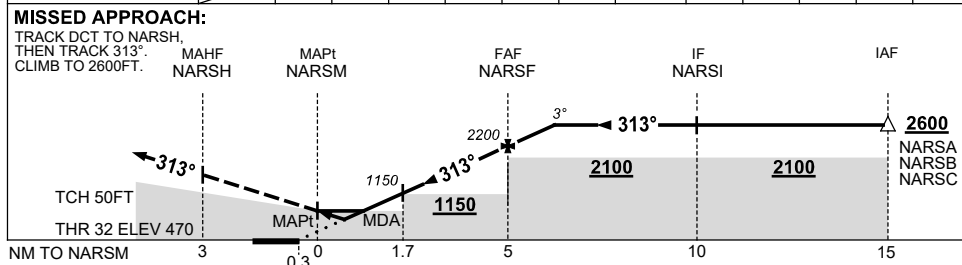
RNP RWY 32

15 JUN 2023

NARRANDERA, NSW (YNAR)



NM TO NEXT WPT	NARSM	0.8	1.4	1.7	2	3	4	NARSF	1	1.3		
ALT (3° APCH PATH)		850	1060	1150	1240	1560	1880	2200	2520	2600		



NOTES

- MAX IAS: INITIAL : 230KT.
- NO CIRCLING EAST OF RWY 14/32.

CATEGORY	A	B	C	D
LNAV/VNAV		850 (380-2.1)		NOT APPLICABLE
LNAV		1060 (586-3.3)		
CIRCLING *	1200 (726-2.4)		1340 (866-4.0)	
ALTERNATE		(1226-4.4)	(1366-6.0)	

Changes: CHART TITLE, PBN SPECIFICATION BOX, Editorial.

NARGN02-175