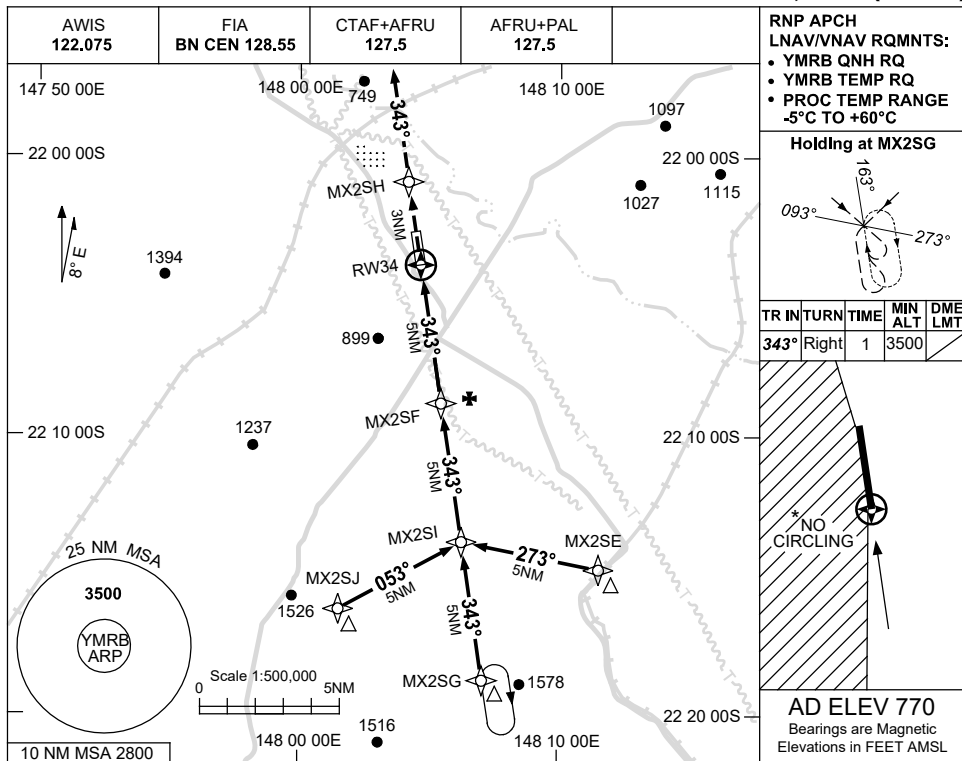


USE QNH

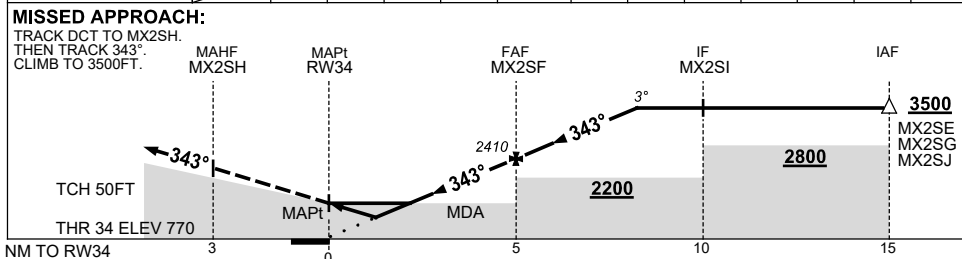
RNP RWY 34

13 JUN 2024

MORANBAH, QLD (YMRB)



NM TO NEXT WPT	RW34	0.9	1.9	3	4	MX2SF	1	2	3	3.5		
ALT (3° APCH PATH)		1120	1440	1780	2090	2410	2730	3050	3370	3500		



NOTES

CATEGORY	A	B	C	D
LNAV/VNAV		1120 (350-2.0)		NOT APPLICABLE
LNAV		1440 (670-3.8)		
CIRCLING	1580 (810-2.4)		1680 (910-4.0)	
ALTERNATE		(1310-4.4)	(1410-6.0)	

- MAX IAS: INITIAL : 210KT.
- BLASTING OPS WITHIN 5NM OF AD.
- NO CIRLING WEST OF RWY 16/34.

Changes: NO CIRCLING, WPT NAMING CONVENTION, NOTE.

MRBG02-179