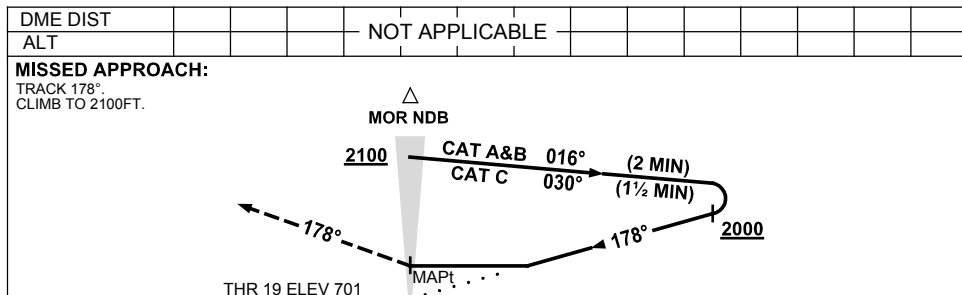
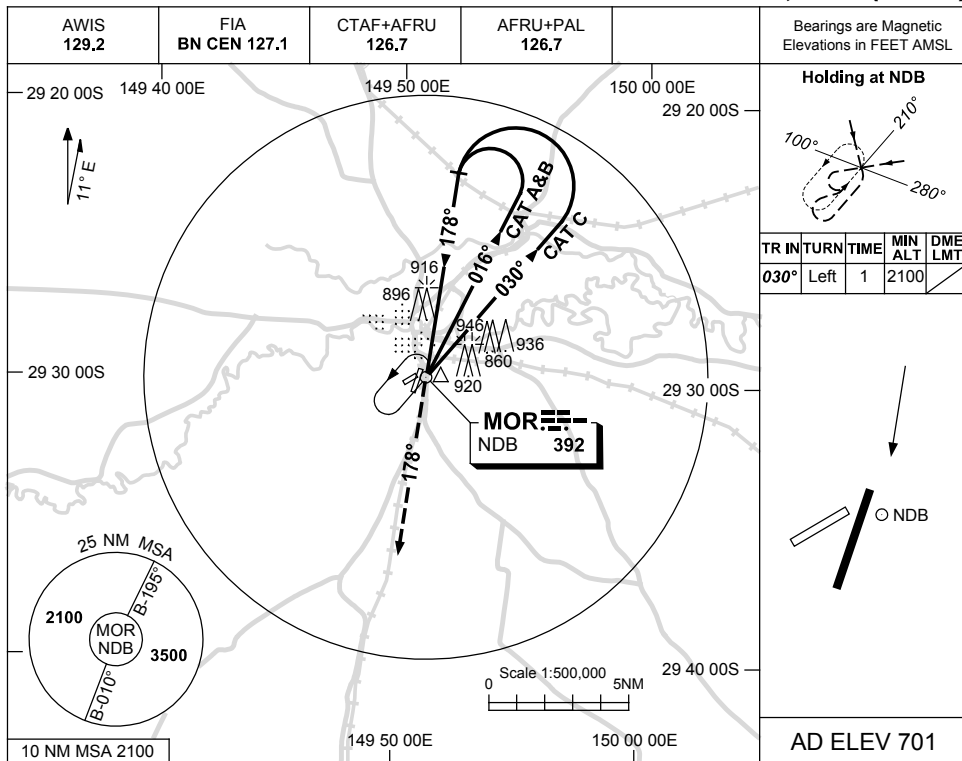


USE QNH

NDB RWY 19
MOREE, NSW (YMOR)

13 JUN 2024



NOTES

CATEGORY	A	B	C	D
S-I NDB	1340 (639-3.6)			NOT APPLICABLE
CIRCLING	1350 (649-2.4)	1450 (749-4.0)		
ALTERNATE	(1149-4.4)		(1249-6.0)	

1. MAX IAS:
 INITIAL : 210KT.

Changes: CIRCLING MINIMA, ALTERNATE MINIMA, COORDS FORMAT, Editorial.

MORNB01-179