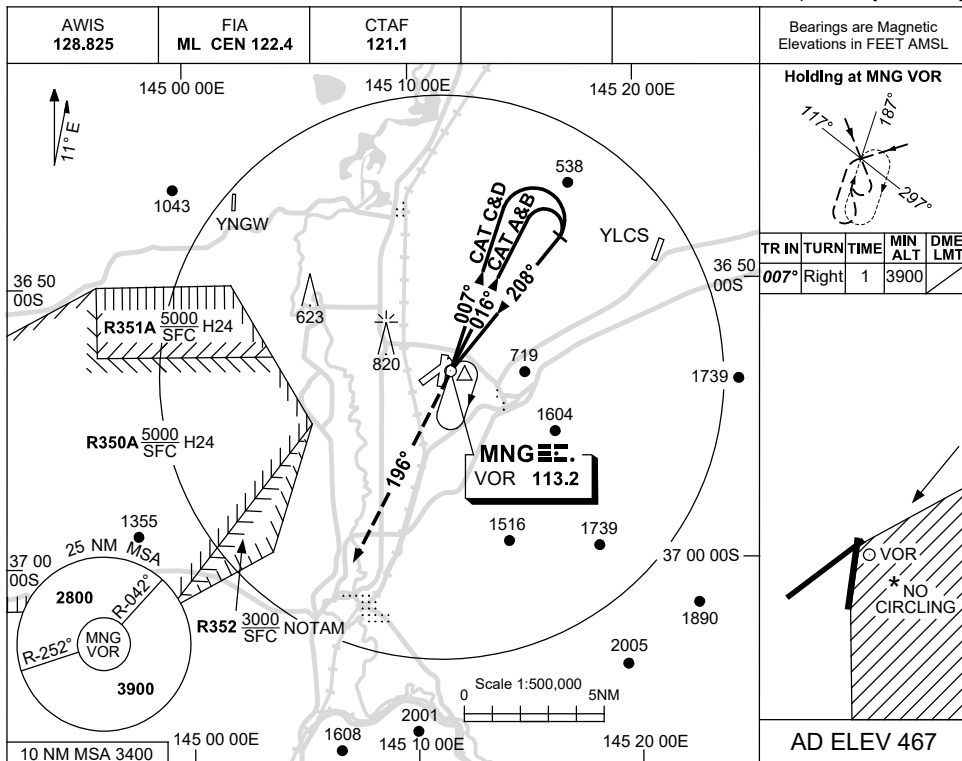


USE QNH

VOR RWY 23  
MANGALORE, VIC (YMNG)

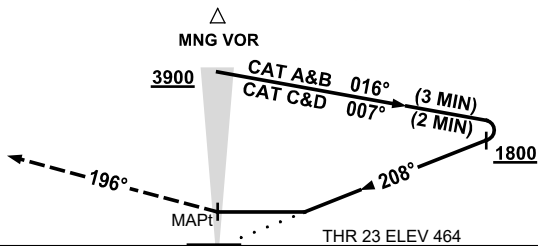
21 MAR 2024



DME DIST	NOT APPLICABLE			
ALT				

**MISSED APPROACH:**

TURN LEFT,  
TRACK 196°  
CLIMB TO 3900ft.



**NOTES**

1. MAX IAS:  
HOLDING : 180KT.  
INITIAL :  
CAT C&D : 180KT.
- \*2. NO CIRCLING IN  
SECTOR EAST OF RWY  
18/36 AND STH EAST  
OF RWY 05/23.
3. SEPARATION FM  
R350A/B & R352 NOT  
ASSURED WHEN  
HLDG OR IN THE  
MISSED APCH

CATEGORY	A	B	C	D
S-I VOR	<b>1120 (653-3.7)</b>			
CIRCLING *	<b>1320 (853-2.4)</b>	<b>1420 (953-4.0)</b>	<b>1420 (953-5.0)</b>	
ALTERNATE	(1353-4.4)	(1453-6.0)		(1453-7.0)

Changes: NOTES.

MNGV001-178