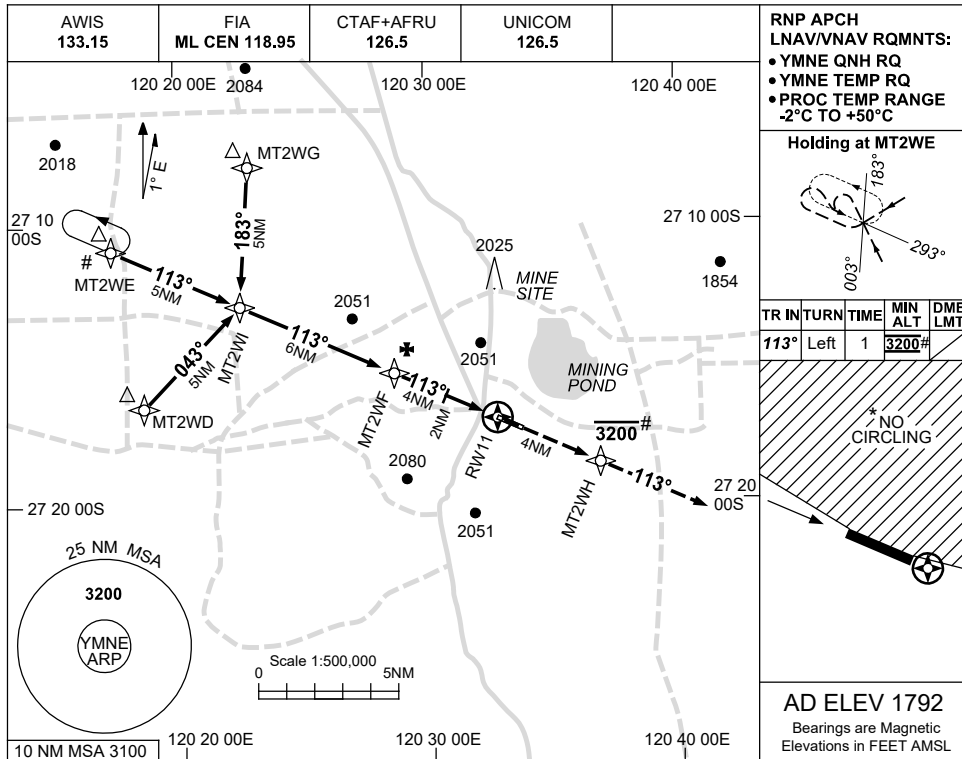


USE QNH

RNP RWY 11

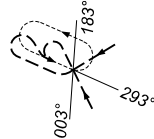
MOUNT KEITH, WA (YMNE)

7 SEP 2023

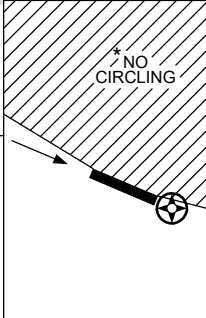


RNP APCH
LNAV/VNAV RQMNTS:
• YMNE QNH RQ
• YMNE TEMP RQ
• PROC TEMP RANGE
-2°C TO +50°C

Holding at MT2WE



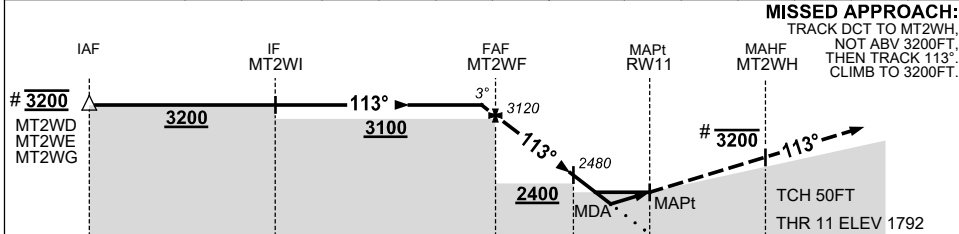
TR	IN	TURN	TIME	MIN ALT	DME LMT
113°	Left	1		3200#	



AD ELEV 1792

Bearings are Magnetic
Elevations in FEET AMSL

NM TO NEXT WPT	0.3	MT2WF	3	2	1.5	0.7	RW11
ALT (3° APCH PATH)	3200	3120	2800	2480	2330	2070	



MISSED APPROACH:
TRACK DCT TO MT2WH,
NOT ABV 3200FT,
THEN TRACK 113°
CLIMB TO 3200FT.

TCH 50FT
THR 11 ELEV 1792

NOTES

- MAX IAS:
INITIAL : 210KT.
- NO CIRCLING NTH OF RWY 11/29.
- CAUTION:** PROC IS OVERLAI BY YBLU RNP RWY 19. PRESCRIBED ALTITUDES ENSURE SEPARATION.

CATEGORY	A	B	C	D
LNAV/VNAV		2070 (278-1.5)		NOT APPLICABLE
LNAV		2330 (538-3.0)		
CIRCLING *	2480 (688-2.4)		2600 (808-4.0)	
ALTERNATE	(1188-4.4)		(1308-6.0)	

Changes: CHART TITLE, PBN SPECIFICATION BOX, NOTE 3, Editorial.

MNEGN01-176