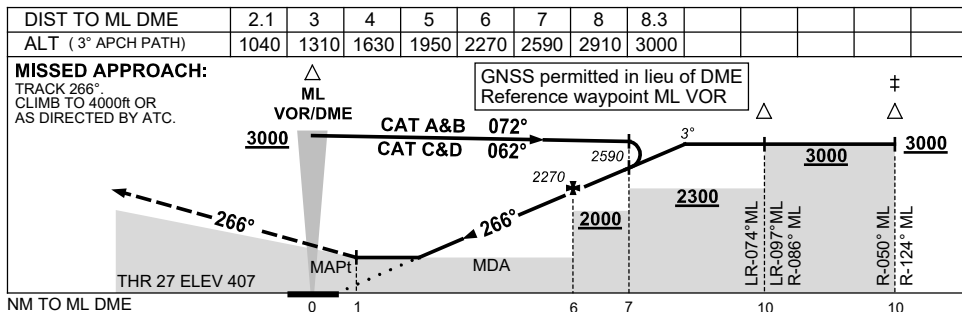
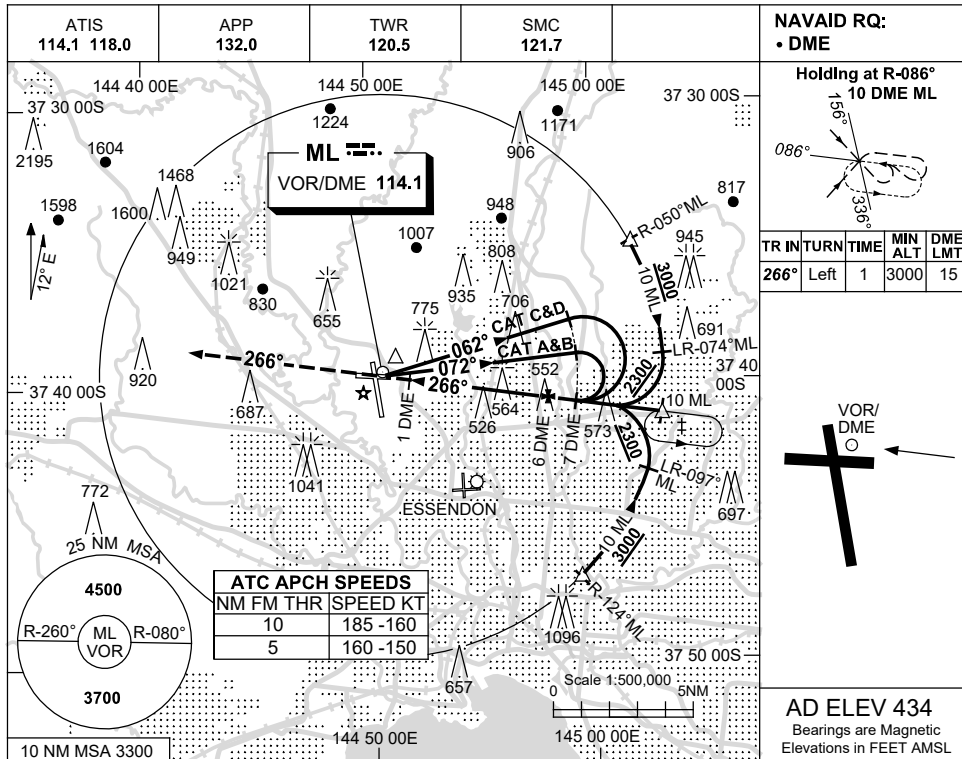


USE QNH

VOR RWY 27  
MELBOURNE, VIC (YMML)

21 MAR 2024



**NOTES**

CATEGORY	A	B	C	D
S-I VOR/DME	<b>1040 (633-2.9)</b>			
CIRCLING	<b>1140 (706-2.4)</b>		<b>1450 (1016-4.0)</b>	
ALTERNATE*	(1206-4.4)		(1666-7.0)	

\* 1. SPECIAL ALT MNM NOT APPLICABLE.  
 † 2. ACFT MAY BE RADAR VECTORED TO IAF.

Changes: VAR.

MMLVO02-178